

Tall Wood Buildings

Expanding Multi-Family Development Opportunities

SPEAKERS



Mike Romanowski, SE
Regional Director
WoodWorks



A-P Hurd
President
SkipStone

October 31, 2023 @ 11:40 AM PDT



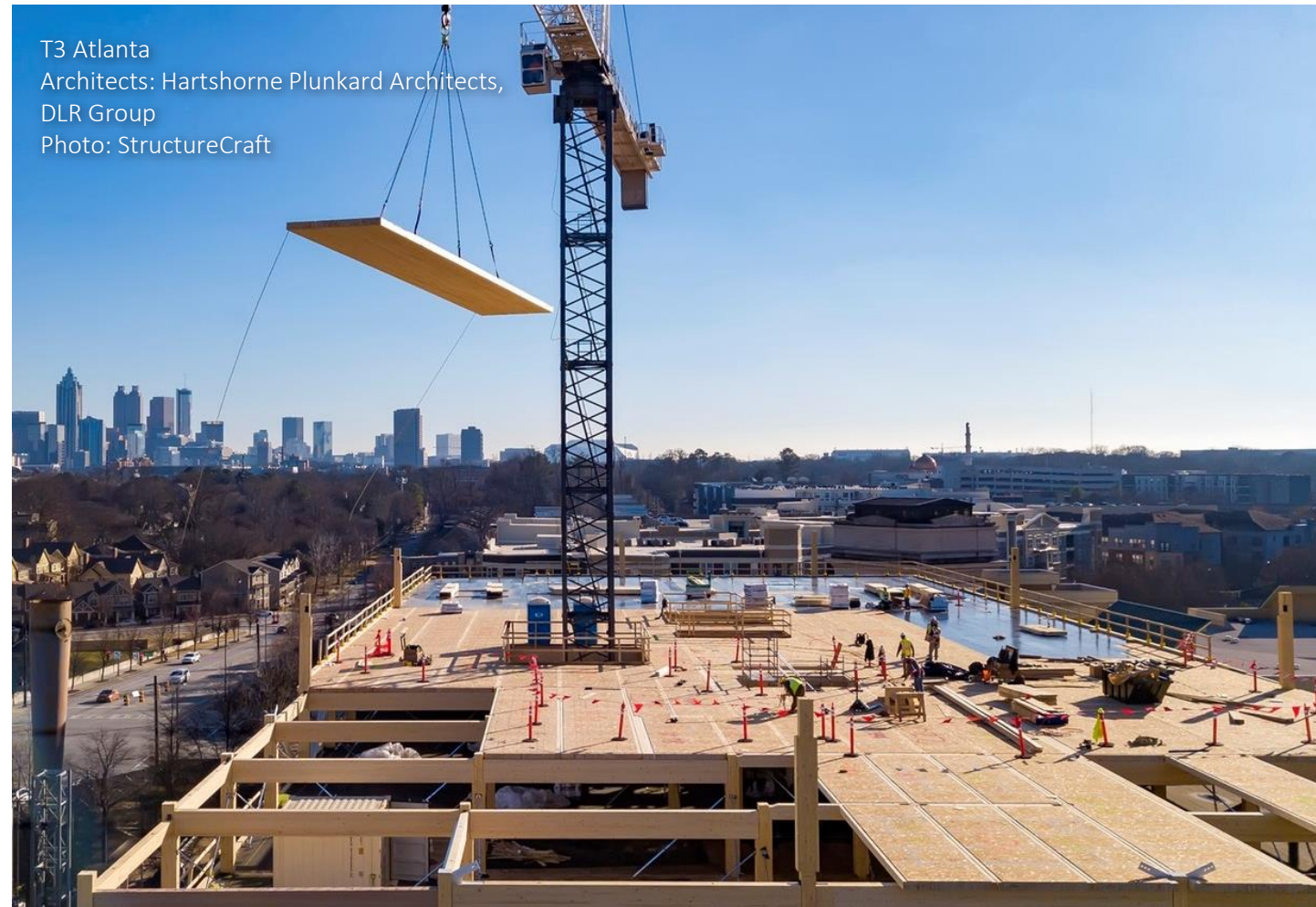
FALL MEETING

CONNECT WITH THE WORLD OF REAL ESTATE

Free Assistance for Developers & Design Teams

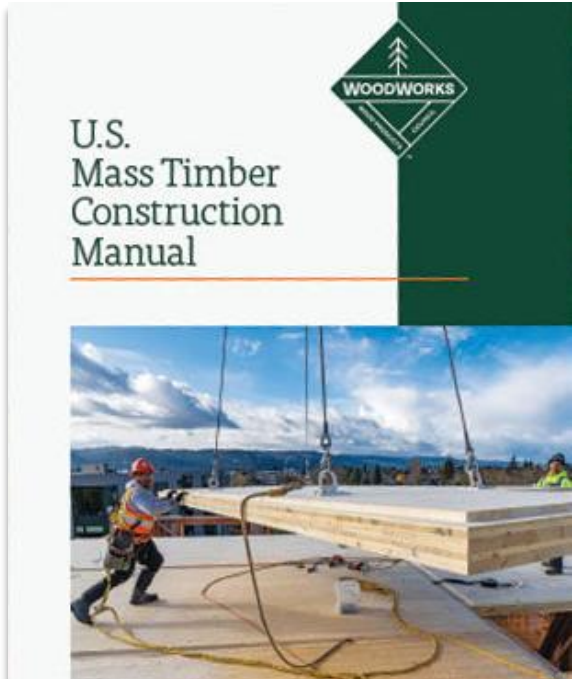
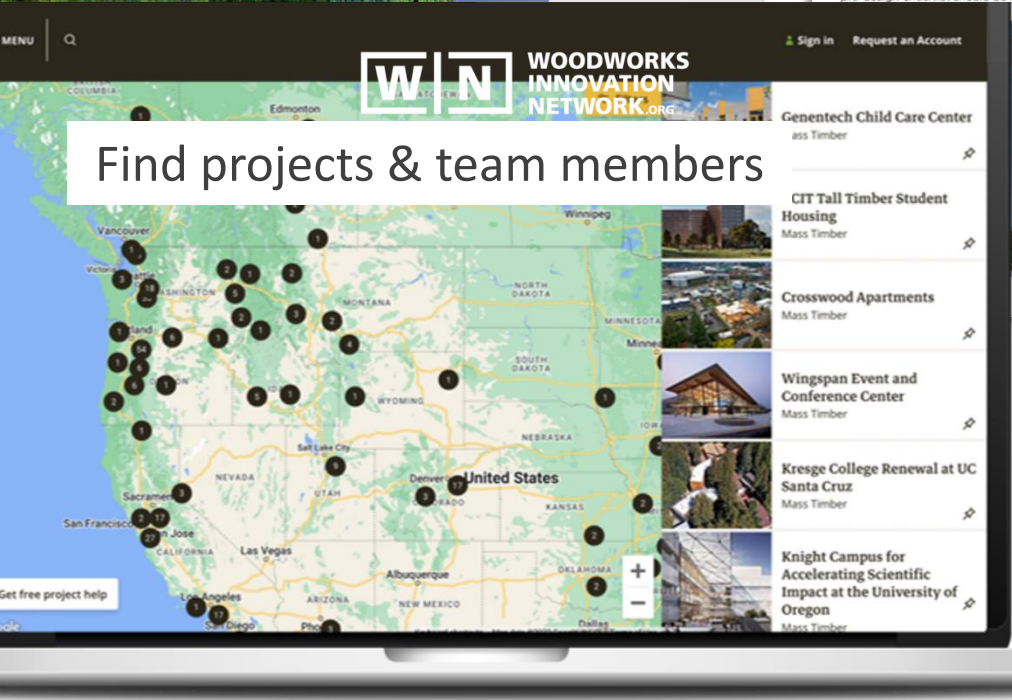
- Innovative mass timber applications
- New tall wood code provisions
- Maximizing heights and areas
- Finding experienced designers and builders
- Environmental performance
- Structural and other systems

help@woodworks.org



Resources for Developers/Owners

Scan for website



13 tall wood projects already under construction or built.

 **Carbon 12**
Portland, OR
8 stories mass timber


 **Ascent**
Milwaukee, WI
25 stories – 19 mass timber

 **11 E Lenox**
Boston, MA
7 stories mass timber

 **Heartwood**
Seattle, WA
8 stories mass timber

 **Bakers Place**
Madison, WI
15 stories – 12 mass timber


 **80 M Street**
Washington DC
10 stories – 3-story mass
timber vertical addition

 **Minnesota Places**
Portland, OR
8 stories – 7 mass timber

 **INTRO**
Cleveland, OH
9 stories – 8 mass timber

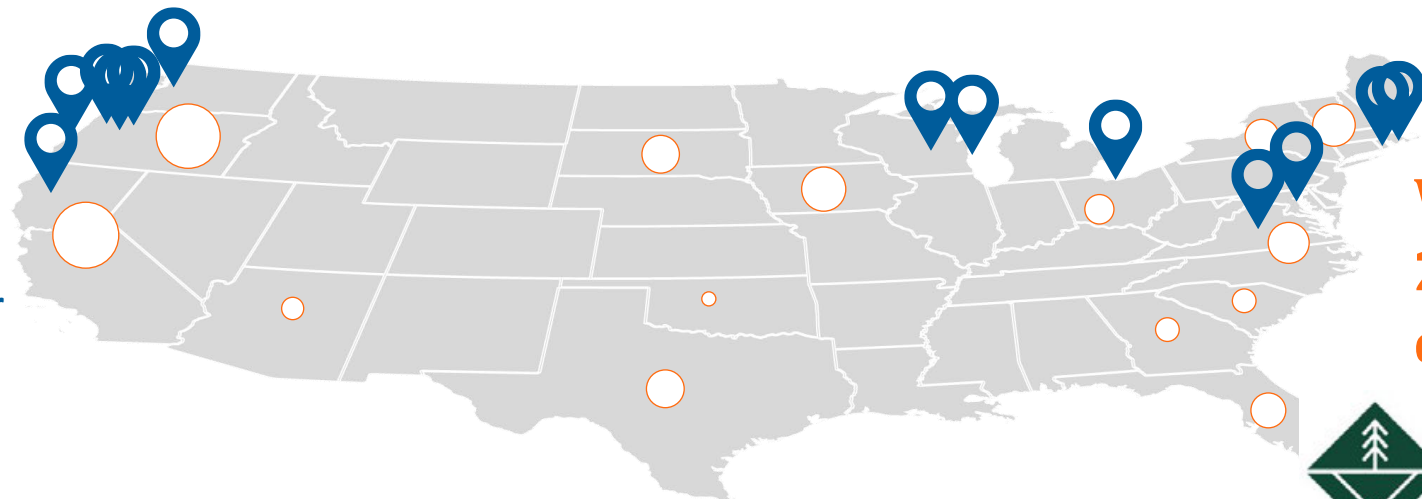
 **Apex Plaza**
Charlottesville, VA
8 stories – 6 mass timber

 **Bunker Hill Housing**
Boston, MA
6 stories mass timber



 **TimberView**
Portland, OR
8 stories mass timber

 **1510 Webster**
Oakland, CA
19 stories – 16 mass timber

 **2057 SW Park**
Portland, OR
12 stories mass timber



TALL WOOD

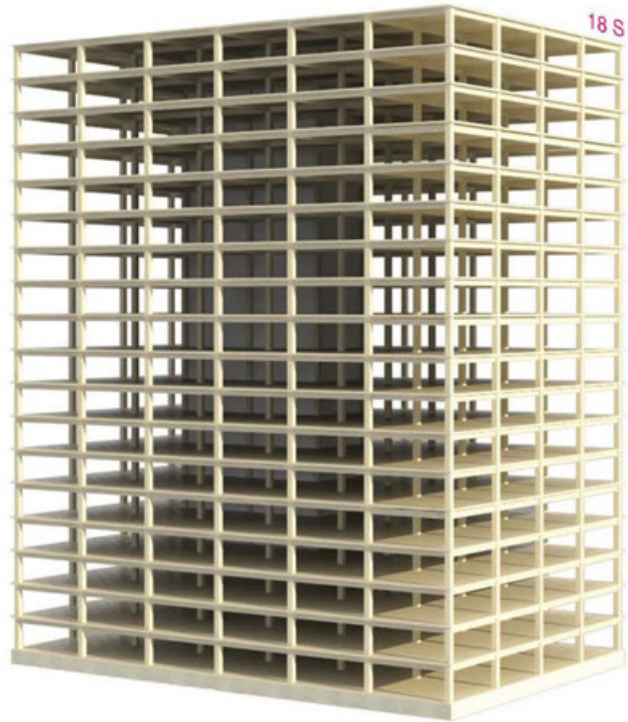
 = clusters of tall wood
projects in design
 = tall wood project in
construction or completed

**We are supporting
207 tall wood
design projects**



WOODWORKS™
WOOD PRODUCTS COUNCIL

Type IV-A



18 Stories

Height = 270'

Wood covered/ not exposed

Image: Susan Jones, atelierjones



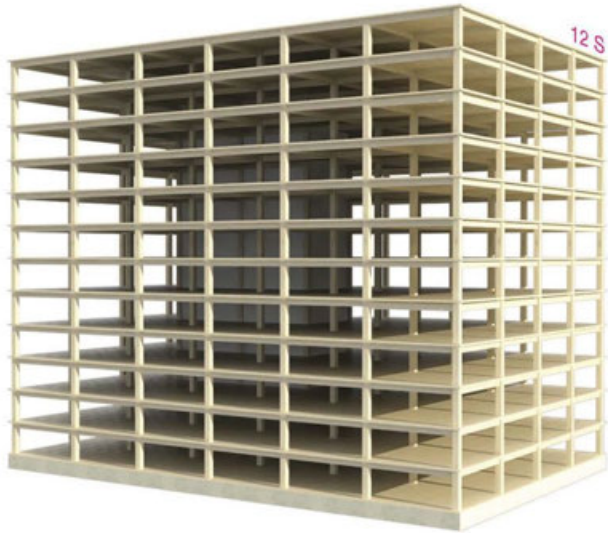
1510 Webster

Oakland, CA

Developer/Architect/Builder: oWOW

Images: Andrew Nelson

Type IV-B



12 Stories

Height = 180'

Wood partially exposed

Image: Susan Jones, atelierjones



Baker's Place

Madison, WI

Developer: The Neutral Project

Images: Michael Green Architecture

Type IV-C

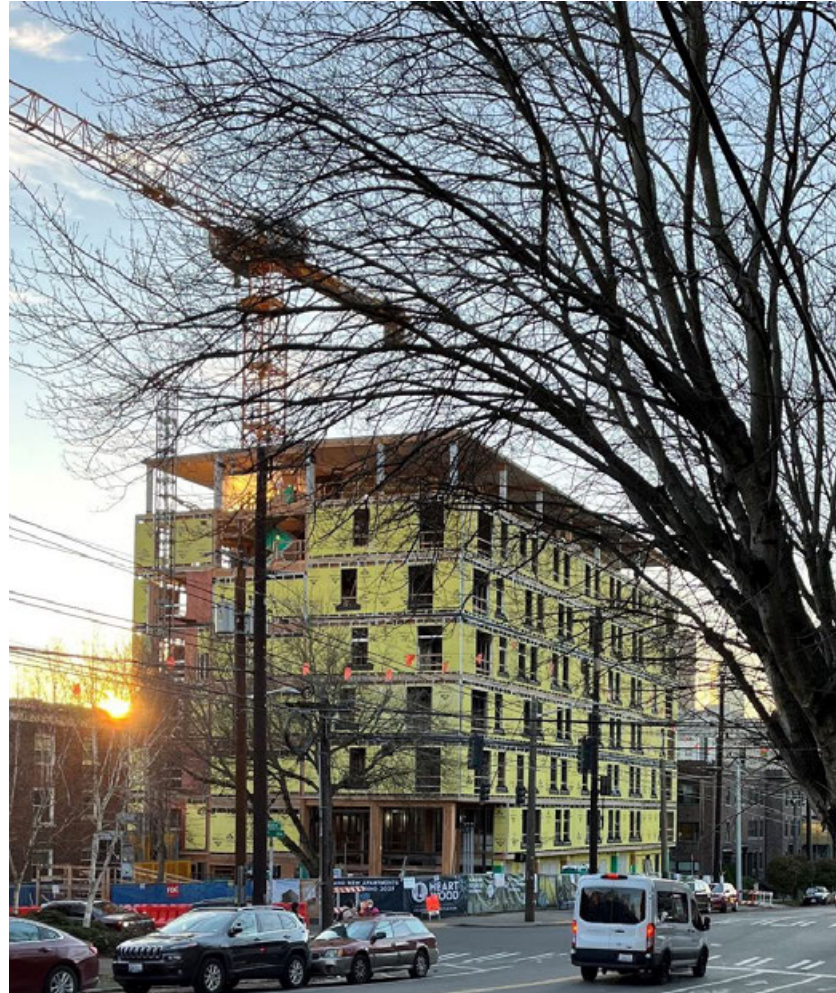


9 Stories

Height = 85'

Wood fully exposed

Image: Susan Jones, atelierjones



Heartwood

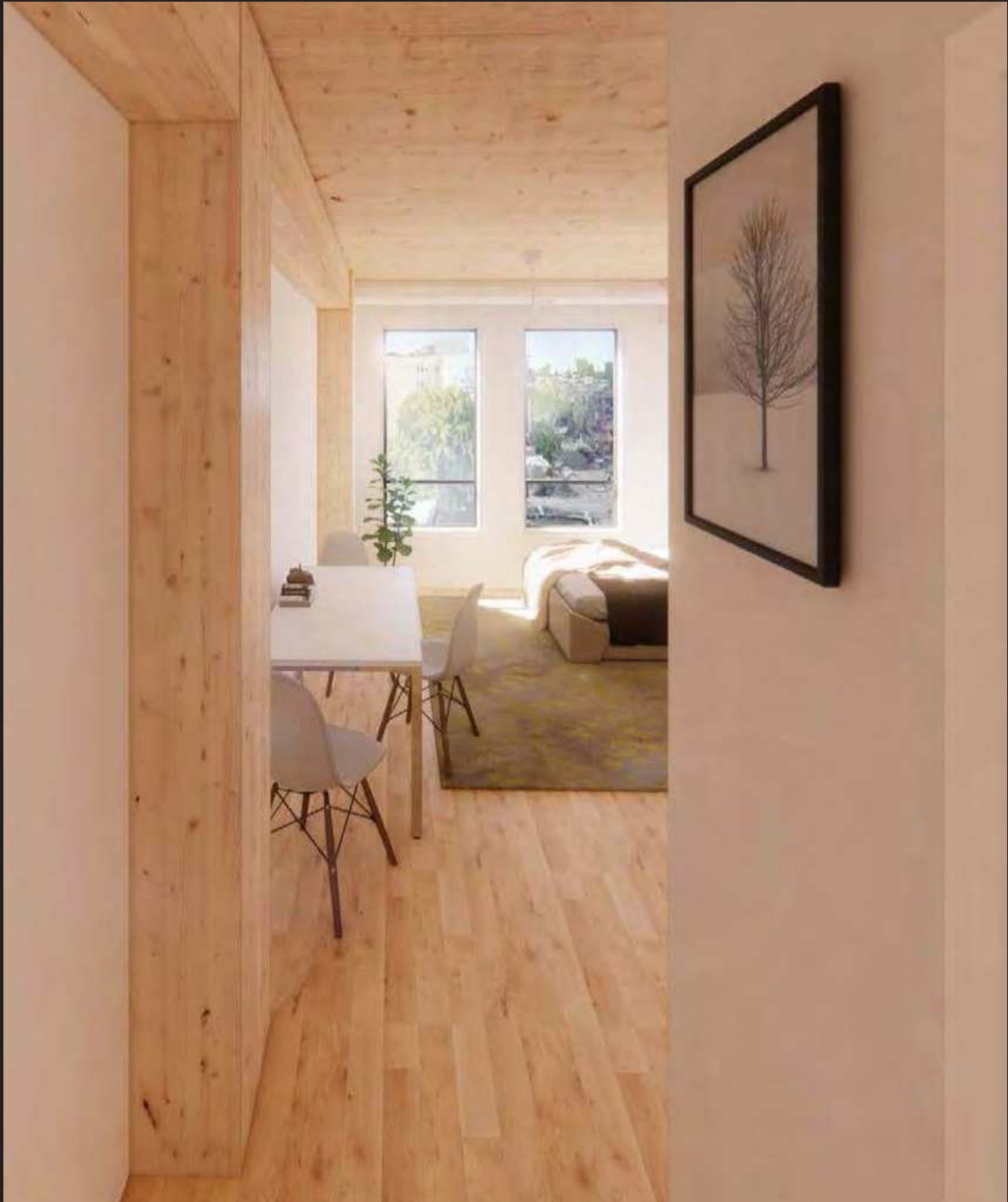
Seattle, WA

Community Roots Housing | Skipstone

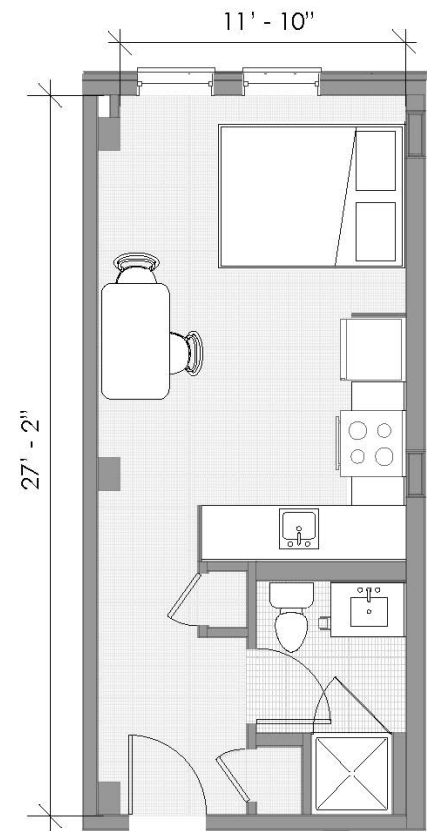
Images: Susan Jones, atelierjones

heartwood type IV-C





TYPICAL STUDIO



total SF: 321



Q&A

CONTACT:

Mike Romanowski, SE
Regional Director
WoodWorks –
Wood Products Council
mike.romanowski@woodworks.org

A-P Hurd
President
SkipStone
aphurd@skipstonesea.com



FALL MEETING
CONNECT WITH THE WORLD OF REAL ESTATE



collaboration

Copyright Materials

This presentation is protected by US
and International Copyright laws.
Reproduction, distribution, display and use of
the presentation without written permission
of the speaker is prohibited.

© The Wood Products Council 2023

Funding provided in part by the Softwood Lumber Board

Disclaimer: The information in this presentation, including, without limitation, references to information contained in other publications or made available by other sources (collectively “information”) should not be used or relied upon for any application without competent professional examination and verification of its accuracy, suitability, code compliance and applicability by a licensed engineer, architect or other professional. Neither the Wood Products Council nor its employees, consultants, nor any other individuals or entities who contributed to the information make any warranty, representative or guarantee, expressed or implied, that the information is suitable for any general or particular use, that it is compliant with applicable law, codes or ordinances, or that it is free from infringement of any patent(s), nor do they assume any legal liability or responsibility for the use, application of and/or reference to the information. Anyone making use of the information in any manner assumes all liability arising from such use.