

Building with Mass Timber: Insights on Preconstruction, Costing and Collaborative Design

Dave Walsh, Sellen Construction

Disclaimer: This presentation was developed by a third party and is not funded by WoodWorks or the Softwood Lumber Board.

“The Wood Products Council” is a Registered Provider with The American Institute of Architects Continuing Education Systems (AIA/CES), Provider #G516.

Credit(s) earned on completion of this course will be reported to AIA CES for AIA members. Certificates of Completion for both AIA members and non-AIA members are available upon request.

This course is registered with AIA CES for continuing professional education. As such, it does not include content that may be deemed or construed to be an approval or endorsement by the AIA of any material of construction or any method or manner of handling, using, distributing, or dealing in any material or product.

Questions related to specific materials, methods, and services will be addressed at the conclusion of this presentation.



Course Description

How do contractors answer the increasing demand for mass timber buildings from architects and ownership groups? Growing this budding industry requires an understanding from both designers and seasoned construction professionals of how to construct efficiently, navigate jurisdictions new to mass timber, and manage the procurement risks to deliver the dream of a new and optimized building system. This session will consider why some mass timber projects never pass the concept stage, what can mitigate risk and improve financial feasibility, and how the development, architectural, engineering, and construction community can achieve success with mass timber projects of various scales and typologies. Particular emphasis will be given to preconstruction coordination, design input from all parties involved, project delivery methods, and how to achieve the highest level of cost efficiency.

Learning Objectives

1. Understand the preconstruction manager's role in material procurement and MEP coordination of code-compliant mass timber projects.
2. Highlight effective methods of early design-phase cost estimation that keeps mass timber options on the table.
3. Discuss potential construction schedule savings realized through the use of prefabricated mass timber elements.
4. Explore best practices for interaction between manufacturer, design team and preconstruction manager that can lead to cost efficiency and safety on site.



Integrated Decision-making: Mass Timber and Preconstruction

Woodworks

NW Wood Design Symposium
June 19, 2019

**Dave Walsh, AIA, LEED AP BD+C,
Assoc. DBIA**

Director of Sustainability
Sellen Construction

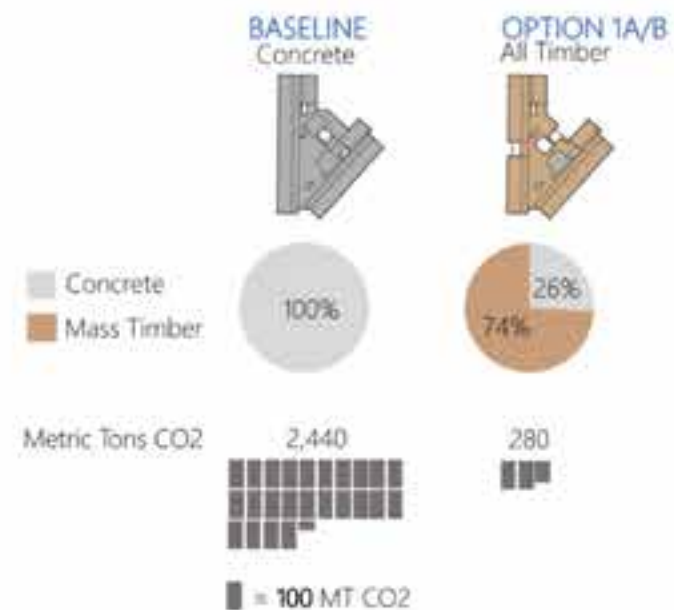
Brelsford WSU Visitor Center | Olson Kundig | Sellen

Sellen

Project Drivers

Factors shaping design, layout, mass timber solutions and cost

- Conducive Zoning
- Program and Efficiency of Repetition
- Changes in Structural Plane from inside to exterior balcony
- Lateral Systems: Still Impact Tall Construction
- Workplace Module, Ability to Optimize Structural Module
- Window Concept and Type of Fenestration
- Soil Conditions / Structural Weight
- Acoustics
- Aesthetic Value / Parity of Visual Experience
- Embodied Carbon
- Tenant / Interior Design and Construction Timing
- Timber Sourcing: Geographic Region or Certified Wood



MS Campus Modernization | ZGF Architects

Holistic System Considerations

How do other building systems interface with mass timber?

- **Structural Comparisons:** Evaluate mass timber along with concrete and steel from the beginning. Consider complete structural systems.
- **What's the mechanical system?** How is air delivered? Can there be beam-free "duct highways" for main distribution
- **If Underfloor Air Distribution Opportunities:** Electrical fed from plenum. Additional perceived height.
- **How does mass timber connect to the core / lateral system?**
- **Floor assembly considerations:** diaphragm connections and exposed floors, acoustics
- **Exterior Skin Interface:** Perimeter Condition impacting type of fenestration, edge beam or not, bearing condition

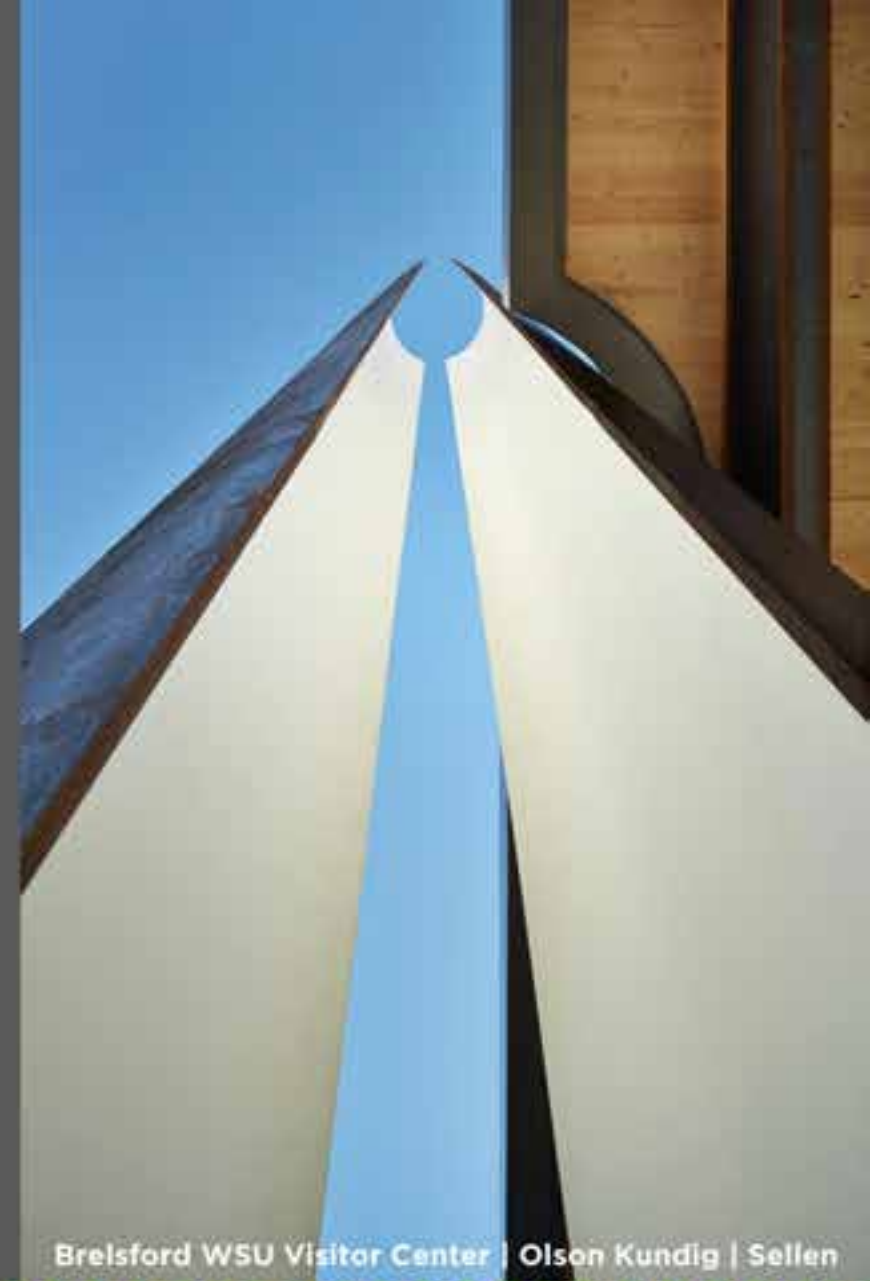


Federal Center South | ZGF Architects | Sellen

Detailing and Finish

Defining appearance expectations

- Connection Style: Concealed or Expressed
- Finish Grade of Mass Timber
- Fire Protection of Connection / AHJ Coordination
- Routing of Electrical Conduit / Ceiling Design Concept
- Predrilling and Routersing Opportunities
- Integration of Steel and Concrete Elements / Stain Protection
- End Grain Protection
- Wash or Stain / Seal

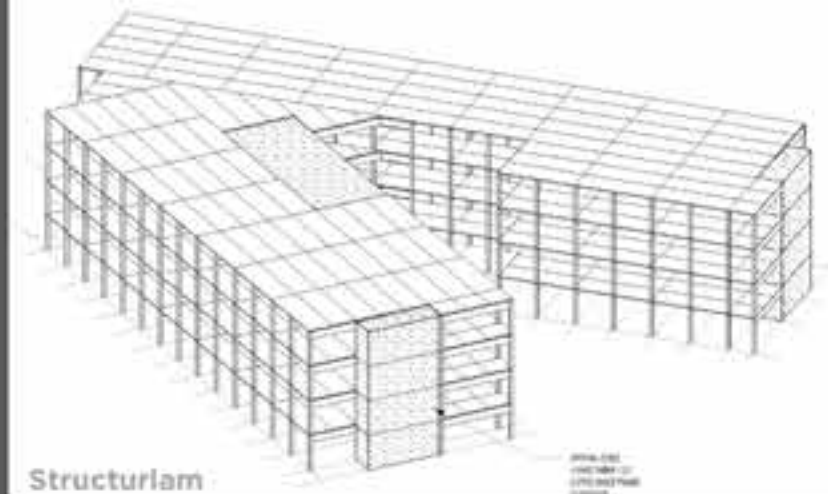


Brelsford WSU Visitor Center | Olson Kundig | Sellen

Preconstruction and Installation

Due-diligence issues for a successful procurement and construction

- Early on-boarding of Mass Timber Manufacturer
- Press Size / Piece Count / Hoisting Durations
- Fabrication Capacity / Phased Construction
- Extent of Preconstruction Services
- Design to CNC Fabrication
- Factory finish / Factory Wrap
- Phased Delivery / Phased Sequencing
- Type of On-site Protection of Product
- Self-performed / subcontracted erection
- Final finish
- Post-warranty Maintenance Program



Structurlam



Brelsford WSU Visitor Center | Olson Kundig | Sellen

Advantageous Alignments

What conditions increase feasibility and reduce cost?

More Challenging or Not Impactful

Mass Timber could be Advantageous

Plan Efficiency

Low

High

Ability to Reduce Spans for Fewer Plys

Low

High

Need for Light Structure (Soils)

Not a Project Driver

High. Piles likely required

Biophilia / Market Differentiation

Not a Project Driver

Project Goal

Type of Air Distribution

Overhead Ducted

Underfloor Air Distribution

Embodied Carbon Importance *

Not a Project Driver

High

Desire for Regional Sourcing *

Not a Project Driver

High

* = sourcing, harvest and manufacturing specifics will determine the degree of impact



Thanks

Contact:
Dave Walsh
Director of Sustainability
Sellen Construction

davidw@sellen.com

Brelsford WSU Visitor Center | Olson Kundig | Sellen

> QUESTIONS?

This concludes The American Institute
of Architects Continuing Education
Systems Course

Dave Walsh
Sellen Construction
davidw@sellen.com