



Making the Case & Keeping Costs in Check

August 2020

Jeff Peters, PE, CGC

Southeast Regional Director, WoodWorks

Reduce Risk

Optimize Costs

- Guiding discussions between:
 - Designers (architects & engineers)
 - Builders (general contractors, estimators, fabricators & installers)
 - Owners (developers & construction managers)
- Lots of reference documents

Mass Timber Cost and Design Optimization Checklists

WoodWorks has developed the following checklists to assist in the design and cost optimization of mass timber projects.

The *design optimization* checklists are intended for building designers (architects and engineers), but many of the topics should also be discussed with the fabricators and builders. The *cost optimization* checklists will help guide coordination between designers and builders (general contractors, construction managers, estimators, fabricators, installers, etc.) as they are estimating and making cost-related decisions on a mass timber project.

Most resources listed in this paper can be found on the WoodWorks website. Please see the end notes for URLs.

First Tech Federal
Credit Union -
Indianapolis, IN
ARCHITECT
Hickman
INTERIOR
Expert Design & Associates
Equilibrium Consulting
CONTRACTOR
Gannett



Download Checklists at
www.woodworks.org

www.woodworks.org/wp-content/uploads/wood_solution_paper-Mass-Timber-Design-Cost-Optimization-Checklists.pdf

Mass Timber Cost & Design Optimization Checklists

Overview

Pre-Design Checklist:

- ☑ Design & Builder Team
- ☑ Cost Estimating Considerations
- ☑ Contractual Considerations
- ☑ Design Goals
- ☑ Contact WoodWorks

Avoid:

- Design-bid-build

Consider:

- CM at risk
- Design-assist
- IPD
- Design-build

Potential Benefits	Project Goal ✓	Value Add ✓
Fast construction		
Aesthetic Value (Leasing velocity/ premiums) Healthy Building / Biophilia		
Lightweight structure		
Labor shortage solution <ul style="list-style-type: none">• small crews• entry level workers		
Just-in-time delivery (ideal for dense urban sites)		
Environmentally friendly (low carbon footprint)		
Healthy forests/ wildfire resiliency & support rural economies		

Seattle Mass Timber Tower: Detailed Cost Comparison

Fast Construction



- Textbook example done by industry experts
- Mass timber vs. PT conc
- Detailed cost, material takeoff & schedule comparisons

“The initial advantage of Mass Timber office projects in Seattle will come through the **leasing velocity** that developers will experience.”

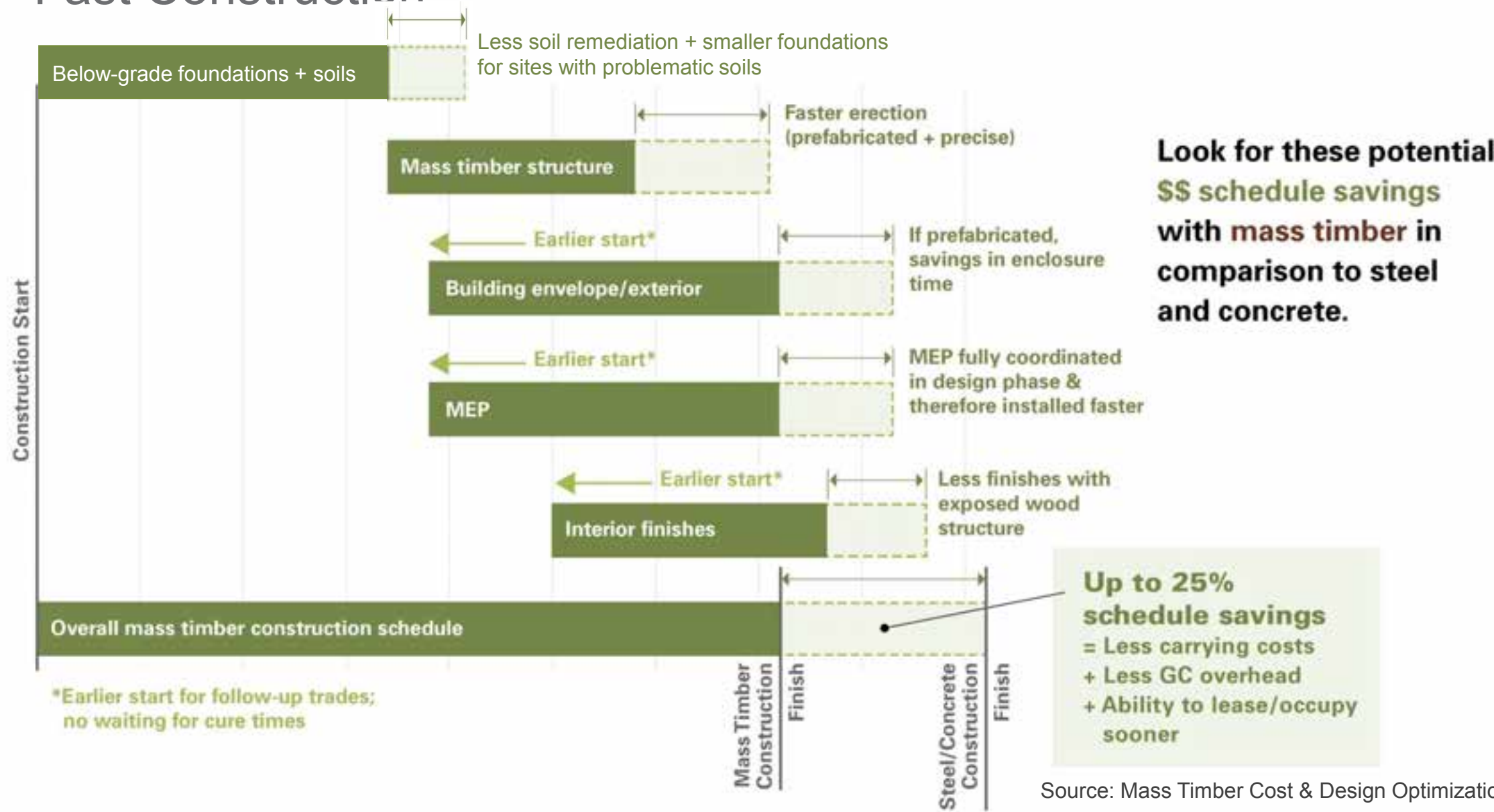
- Connor Mclain, Colliers¹

Download Case Study:

<http://www.fastepp.com/wp-content/uploads/181109-Seattle-Mass-Timber-Tower-Book.pdf>

Compressing the Typical Schedule

Fast Construction



Schedule Examples

Fast Construction

Example Timeframes for Mass Timber Projects					
Project	Stories	Area	Type	Time to Erect the Mass Timber Structure	Overall Construction Schedule
First Tech Credit Union <i>(Swinerton⁸)</i>	5	150,000 sf	Office	12 weeks	14 months
Candlewood Suites at Redstone Arsenal <i>(Lendlease⁹)</i>	4	62,700 sf	Military hotel	16 weeks	12 months
Seattle Mass Timber Tower <i>(DLR Group hypothetical case study¹⁰)</i>	12	305,000 sf	Mixed-use office and hotel	24 weeks	18 months

Candlewood Suites: Military Hotels

Labor Shortage Solutions



Photos: Lendlease



Redstone Arsenal:

- 37% faster overall²
- 40% fewer construction workers²
- Trained unemployed veterans

Prefab Assemblies:

- Bathroom Pods
- Facades
- MEP Racks

Developer, Asset Manager, Design Builder: Lendlease
Locations: Redstone Arsenal, Huntsville, Alabama

Leading Office Developer Embraces Mass Timber

T3 = Timber, Transit & Technology



Photos: Ema Peter; MGA



IV (HT)

- 6 stories wood over podium
- 220,000 sf
- *Finance & Commerce* reports:
 - **\$25 to 50 million** project cost³ (2016 completion)
 - **\$87 million** purchase price (May 2018 sold to LaSalle)⁴

Location: Minneapolis, MN
Architect: Michael Green Architecture, DLR Group
Structural Engineer: Magnusson Klemencic Associates
Mass Timber Engineer: StructureCraft

Leading Office Developer Embraces Mass Timber

T3 Minneapolis



Photo: WoodWorks

Location: Minneapolis, MN
Architect: MGA | Michael Green Architecture, DLR Group
Structural Engineer: Magnusson Klemencic Associates
Mass Timber Engineer: StructureCraft

IV (HT)

- 20' x 25' grid
- 2x8 NLT spanning 20 ft
- MEP mains routed around core w/ a shorter bay spacing & shallower beam
- Timber erection:
 - 2.5 months total
 - 9 days per 30,000-sf floor
- **Foundation \$ savings:**
 - 30% lighter than steel
 - 60% lighter than conc⁵

Tenant Build Outs – Potentially Lower Costs

Starting with Aesthetic Value of Structure



ULI Report: The Business Case for Healthy Buildings

Healthy Building/ Biophilia

Global Wellness Real Estate Industry:

- \$134 billion industry in 2017
- 6.4% annual increase since 2015
- \$180 billion industry by 2022

Healthy Bldgs ROI (Survey of 200 Canadian Bldg Owners):

- 46% easier to lease
- 28% command premium rents
- 38% of those who reported value in healthy bldgs said they are worth 7% more than conventional ones

Millennials:

- 78% say workplace quality is important
- 69% would trade other benefits for good workplace

“Health and wellness-focused environments...can help reduce company operating costs and increase revenues and profits.”



Employee Retention

Healthy Building/ Biophilia

Cost of losing an employee
(assume: \$33/ hr):

\$ 1,000 termination

\$ 9,000 replacement

\$15,875 lost productivity

\$25,875 total

Sources by Terrapin Bright Green:

- *Economics of Biophilia*, 2012
- *14 Patterns of Biophilic Design*, 2014
(includes list of testing citations)



55 Southbank: Add Vertical Density over Existing Bldgs

Lightweight



Location: Melbourne, Australia
Architect: Bates Smart
Engineer: Vistek

- Existing building constructed to accommodate future 6-story concrete addition
- Owner wanted 220 key hotel addition:
6-stories conc = no deal
10-stories wood = deal⁶
- Research shows $\frac{1}{4}$ of urban buildings in the world are strong enough to carry additional floors of wood⁷
- Low embodied carbon footprint

Fully Prefabricated: North America's First DLT Office

111 East Grand



Image: Neumann Monson Architects courtesy of Ryan Companies

IIIB

- 4 Story
- 64,000 sf
- First DLT office in the US
- 1st spec office in Des Moines in over a decade⁸
- Superstructure all prefabricated for fast erection.
- Lateral system – precast concrete walls & core

Location: Des Moines, IA
Architect: Neumann Monson
Structural Engineer: Raker Rhodes
Mass Timber Engineer: StructureCraft

Fully Prefabricated: North America's First DLT Office

111 East Grand



IIIB

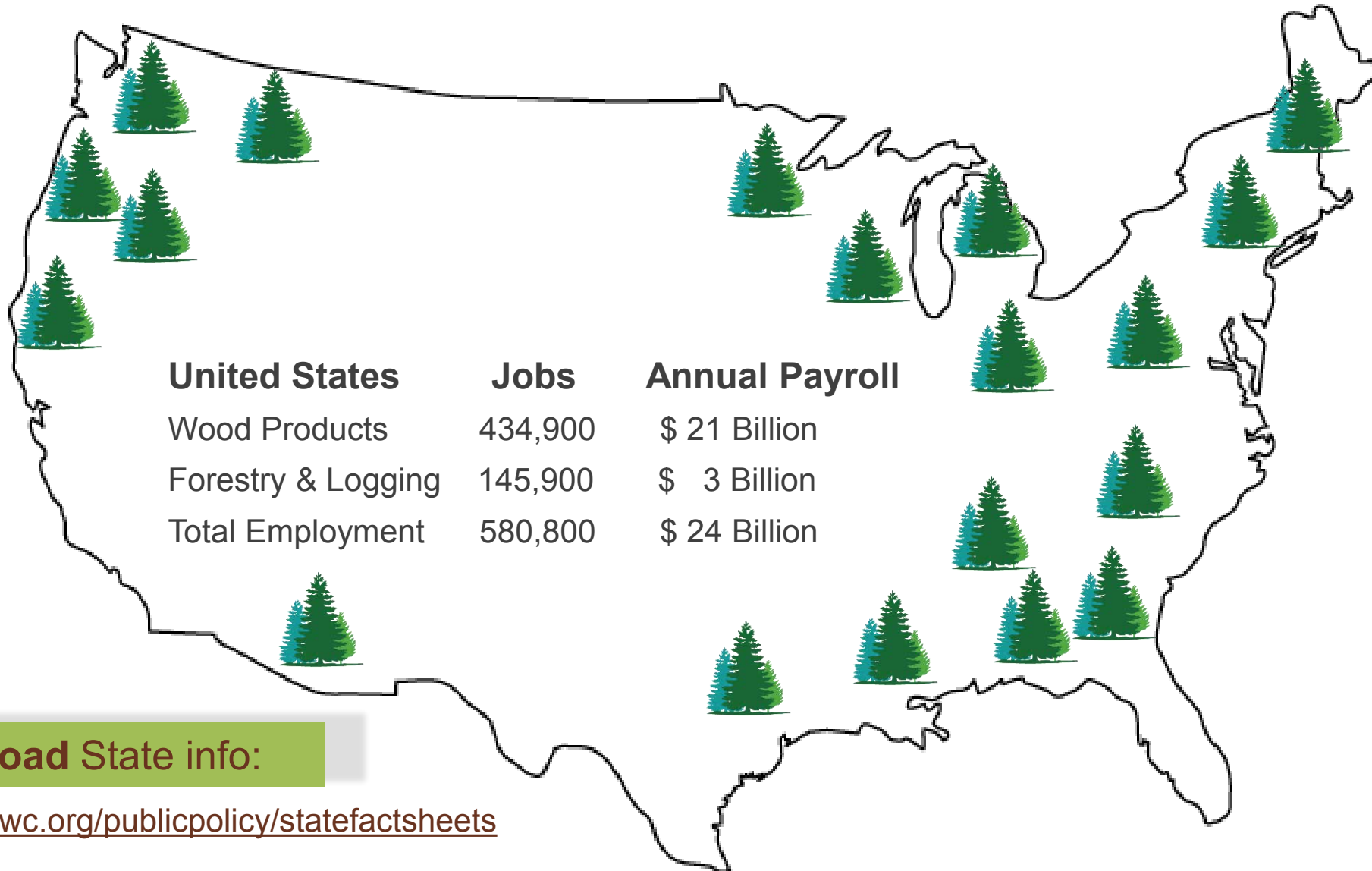
- 20' x 25' grid
- 2x8 DLT spanning 20 ft
- 40' x 6'-4" DLT panels
- Glulam beams & cols

Just-in-time delivery
ideal for tight sites and urban locations

Location: Des Moines, IA
Architect: Neumann Monson
Structural Engineer: Raker Rhodes
Mass Timber Engineer: StructureCraft

Wood Products

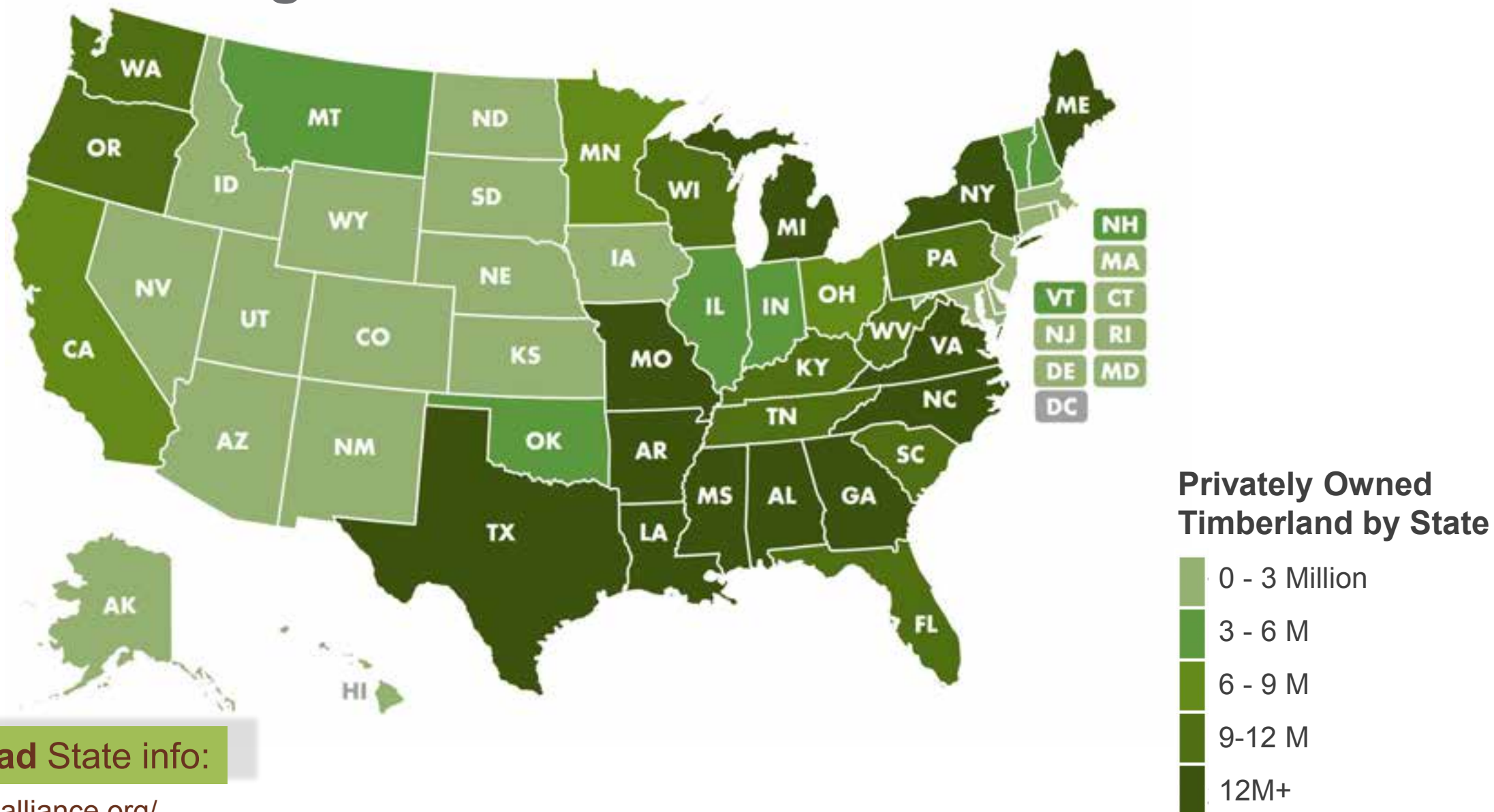
Increase Forest Value & Support Rural Economies



Download State info:

<https://www.awc.org/publicpolicy/statefactsheets>

Private Working Forests



Download State info:

<https://nafoalliance.org/>

Carbon Storage: Wood = 50% Carbon (dry weight) Environmentally Friendly



Image: Kaiser + Path



Image: Lever Architecture

Mass Timber Cost & Design Optimization Checklists

Schematic Design

SD Design Optimization Checklist:

- ☑ Material Optimization/ Grids
- ☑ System Coordination
 - Acoustics/ Vibration
 - Fire Resistance
 - Structural
- ☑ Finish Quality

SD Cost Optimization Checklist:

- ☑ Schedule Savings = Cost Savings
- ☑ Aesthetic Value
- ☑ Less Weight = Cost Savings
- ☑ Fabrication
- ☑ Shipping/ Trucking
- ☑ Installation & Labor



Select lateral system in SD!

Largest Mass Timber Building in the US: Southeast (not PNW)

T3 West Midtown, Atlanta



Photo: StructureCraft

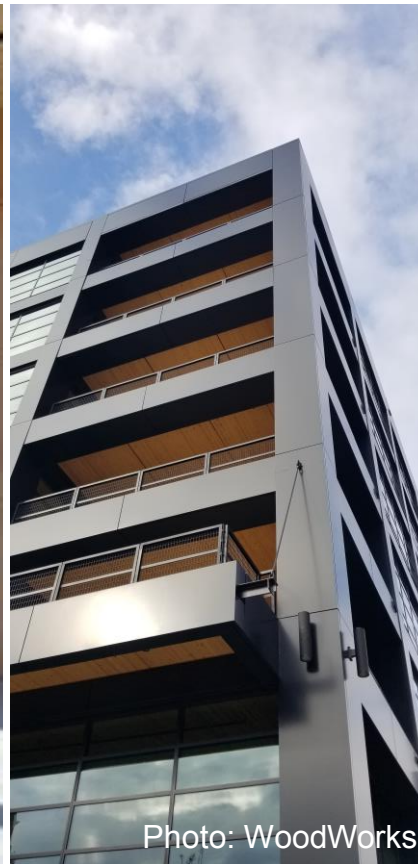


Photo: WoodWorks

IV (HT)

- 6 stories Type IV over podium
- 205,000 sf
- DLT floors, glulam frame
- T3 Atlanta replaces concrete with steel braced-frame lateral system to keep up with **fast speed of mass timber erection**

Location: Atlanta, GA

Architect: Hartshorne Plunkard Architects + DLR Group

Structural Engineer: Magnusson Klemencic Associates

Mass Timber Engineer: StructureCraft

Austin's 1st CLT Office: Built to Attract Millennial Talent

901 E 6th Street



Photo: Structurlam



IIIA

- 5 Story
- 129,000 sf
- CLT & steel frame **hybrid**
- 14-ft Floor to ceiling heights w/ 9' windows
- "Leasing broker feedback... **CLT helped generate interest**, assisted in **faster leasing** and helped support **higher lease rates**."9

Location: Austin, TX

Architect: Thoughtbarn / Delineate Studio

Engineer: LEAP! Structures

Mass Timber Cost & Design Optimization Checklists

Design Development

DD Design Optimization Checklist:

- ✓ Material Optimization/ Grids
- ✓ Hybrid Considerations
- ✓ System Coordination
- ✓ Fire Resistance
- ✓ MEP Systems
- ✓ Finish Quality
- ✓ Key Details

DD Cost Optimization Checklist:

- ✓ Less Weight = Cost Savings
- ✓ Schedule Savings = Cost Savings
- ✓ Cost & Value
- ✓ Fabrication
- ✓ Installation & Labor
- ✓ Protection



Are there areas where you can specify industrial instead of architectural grade finish?

Moisture Management Resources

Keep Wood Dry & Schedule on Track

Moisture Management Guide

(Light-frame & mass timber) **Download:**

<https://www.bchousing.org/publications/Wood-Construction-Moisture-Management-Guide.pdf>

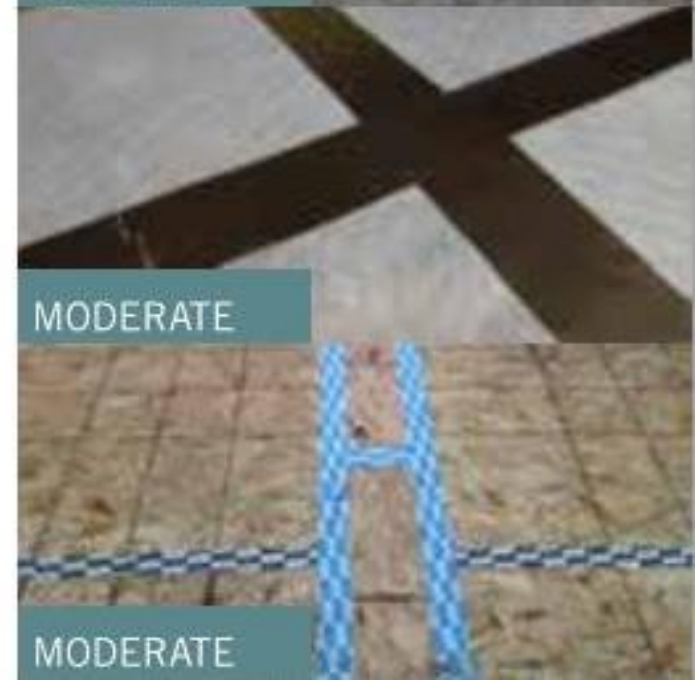
Construction Phase Moisture Management,
Section 7.6 NLT Guide (Good Tips for all MT)

Download:

<https://www.thinkwood.com/products-and-systems/mass-timber/nltguide>

**Moisture Risk Management Strategies for
Mass Timber (by RDH) Purchase:**

<https://www.learnbuildingscience.com/courses/ebook-mass-timber-moisture-risk>



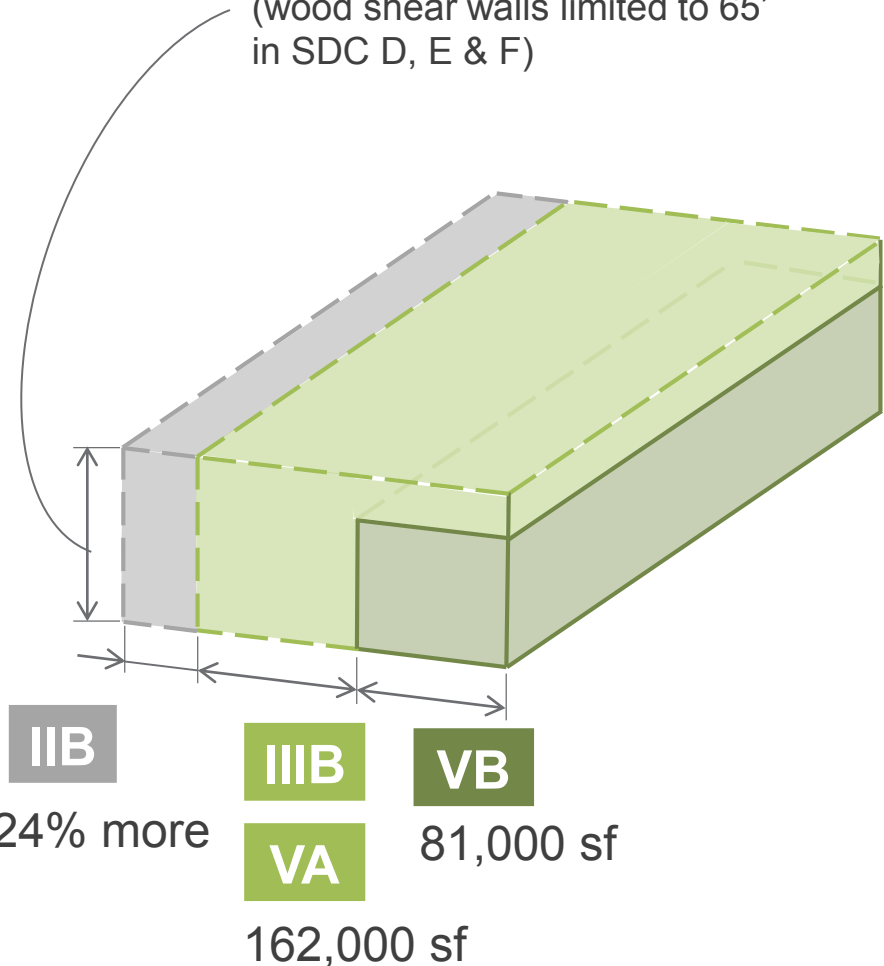
Panels protected until needed

Photo: Alex Schreyer

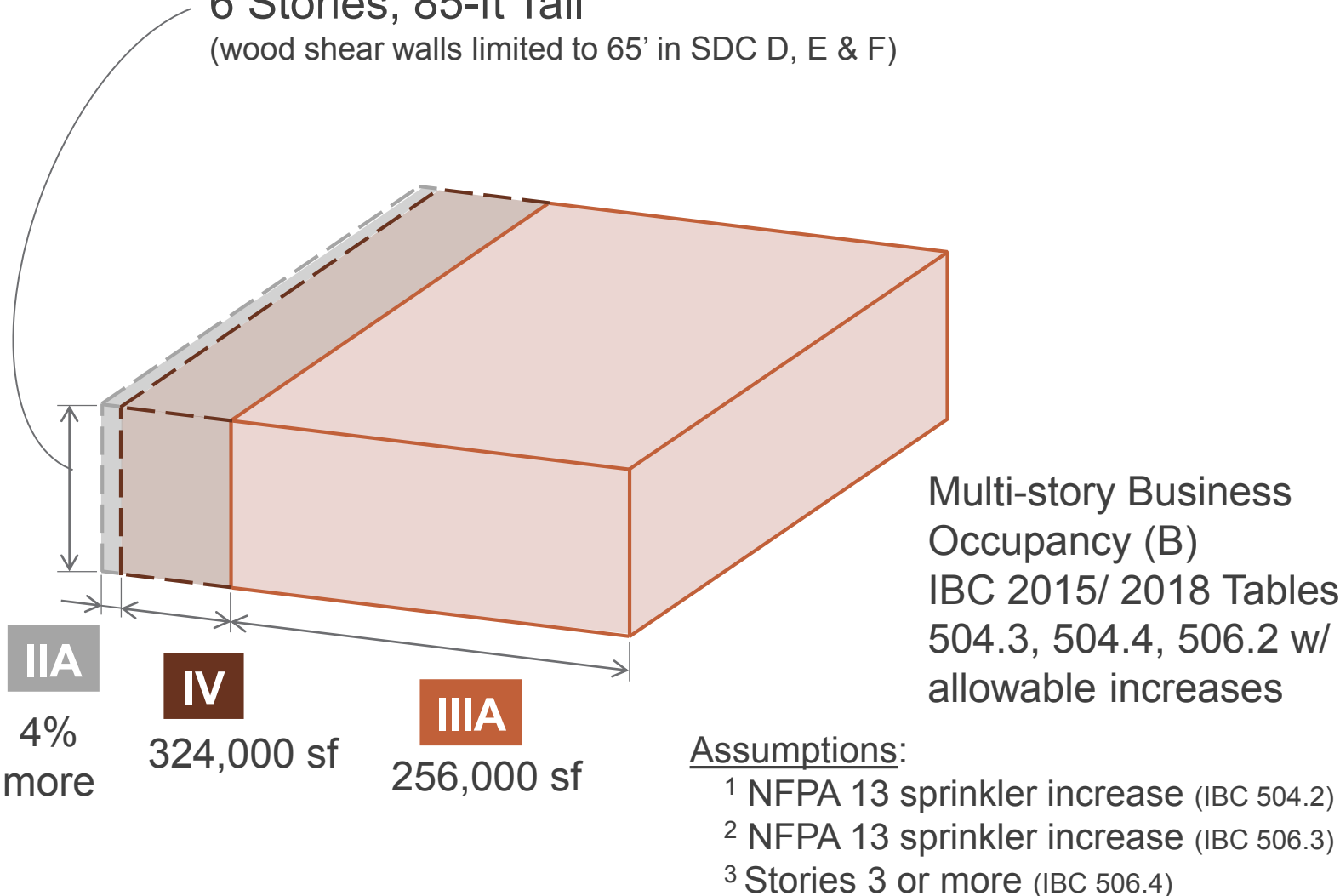
You Don't Have to Start Tall! Wood Allows for Sizeable Buildings

Heights & Areas: 2015 IBC up to 6 Stories (Not incl. new tall wood provisions)

3-4 Stories, 60-75 ft Tall
(wood shear walls limited to 65' in SDC D, E & F)



6 Stories, 85-ft Tall
(wood shear walls limited to 65' in SDC D, E & F)



Heavy Timber Revolution: California's Hip New Commercial Block

ICE Block I



Photo: Bernard Andre

Location: Sacramento, CA
Architect: RMW Architecture & Interiors
Engineer: Buehler Engineering

IIIB

- 3 Story heavy timber over podium
- 87,460 sf
- 20' x 24' grid
- 3x T&G decking

“The **building sold itself** because of its unique character. There really was no true competition in the market. **A lot of the credit goes to the fact that it is a timber building.**”

– Mike Heller, Heller Pacific



Millennials
50% of US workforce!

Attract talent w/ craft
coffee & exposed
timber offices



Microsoft Campus

Image: Microsoft | WRNS Studio



Sidewalk Labs, Toronto

Image: Picture Plane
for Heatherwick Studio for Sidewalk Labs



Google HQ, UK

Image: Google | Lendlease
HayesDavidson for BIG & Heatherwick Studios



University

Adohi Hall, Univ. of Arkansas | Leers Weinzapfel Associates



Industrial

Univ. of Arkansas Library Storage | Perry Dean Rogers Architects



Multi-family

Carbon 12, Portland | Path Architecture | Photo: Andrew Pogue



Multi-family

INTRO, Cleveland | Harbor Bay Real Estate | Image Fiction

ULI Article: Mass Timber's Expanding Presence in the Commercial Building Industry

<https://urbanland.uli.org/sustainability/mass-timbers-expanding-presence-in-the-commercial-building-industry/>

URBANLAND

INDUSTRY SECTORS | CAPITAL MARKETS | DEVELOPMENT | INSIDE ULI | SUSTAINABILITY | TRENDS | ULI MEETING RECAPS | ASIA PACIFIC


Urban Land > Market Trends > Mass Timber's Expanding Presence in the Commercial Building Industry

Mass Timber's Expanding Presence in the Commercial Building Industry

By Beth Mattison-Teig
January 23, 2020

Text Size: **A A A**

[Print](#) [Email](#) [Share](#) [Facebook](#) [LinkedIn](#) [Twitter](#)



The four-story, 110,000-square-foot (10,000 sq m) ICE Block I project in Sacramento was one of the first contemporary, timber-framed mid-rise structures in Northern California. (Heller Pacific/RMW architecture & interiors/Bernard Andre)

Developers around the world who were first movers on buildings that use mass timber for both structural and design elements are seeing a growing wave of projects lining up before them. The regulatory environment is adapting while the business model for use of mass timber is expanding across property types.



A 9-story LendLease coworking space in Brisbane at 25 King Street



An exterior image of Carbon 12 in Portland, Oregon.

Questions?

Jeff Peters, PE, CGC
Southeast Regional Director
WoodWorks – Wood Products Council
Jeff.Peters@WoodWorks.org
386.871.8808