



Type IV Non-prescriptive Alternatives



Mark Chubb, Senior Analyst | Code Unlimited

www.codeul.com

Disclaimer: This presentation was developed by a third party and is not funded by WoodWorks or the Softwood Lumber Board.



Refresher:

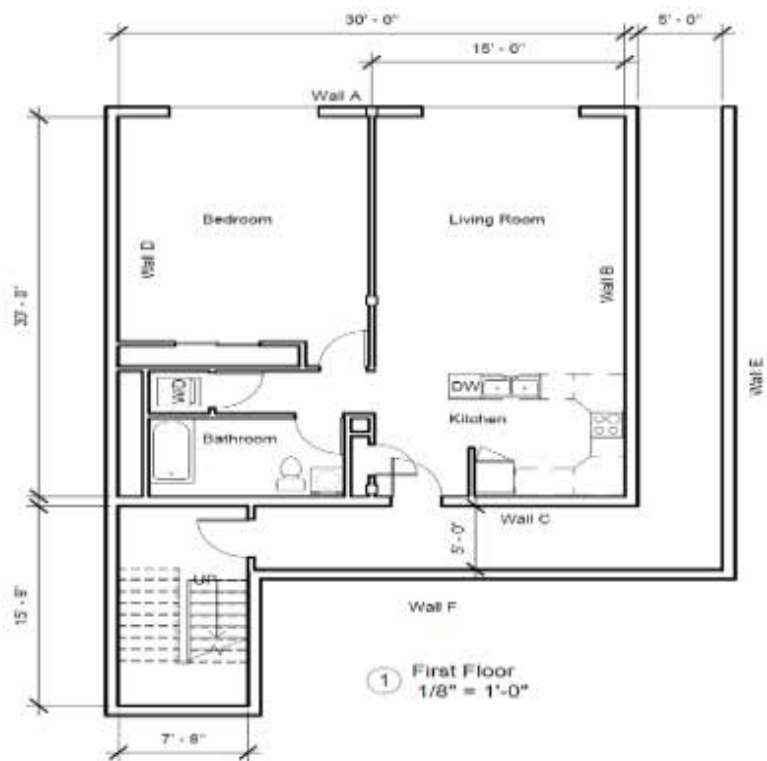
Code Modification

Strict letter of the code is impractical and the modification is in compliance with the intent and purpose of this code.

Alternate Materials, Design, and Methods of Construction and Equipment (AM&Ms)

The proposed design is satisfactory and complies with the intent of the provisions of this code, and that the material, method or work offered is, for the purpose intended, at least the equivalent of.

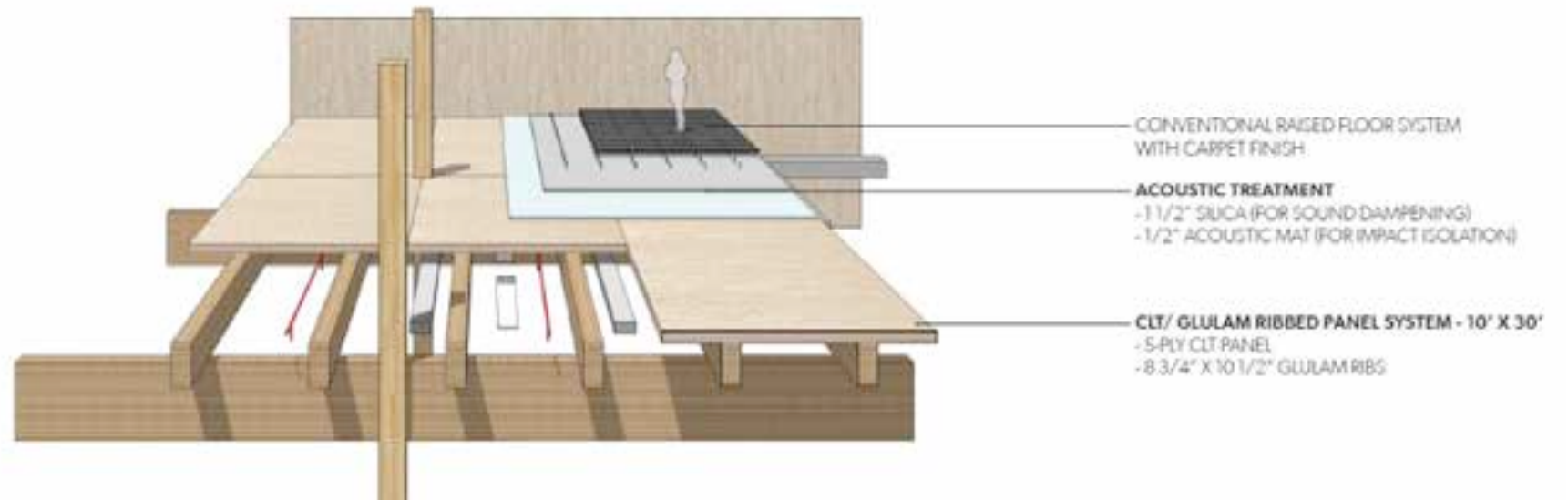
Mass Timber Construction – How



Test	Description	Date	Duration
Test 1	All mass timber surfaces protected with 2 layers of 5/8" Type X GWB	5/23/17	3 hours
Test 2	30% of CLT ceiling area in living room and bedroom exposed	5/31/17	4 hours
Test 3	Two opposing CLT walls exposed – one in bedroom and one in living room (there is a partition wall)	6/20/17	4 hours
Test 4	All mass timber surfaces fully exposed in bedroom and living room. Sprinklered – normal activation	6/27/17	6 minutes
Test 5	All mass timber surfaces fully exposed in bedroom and living room (except bathroom). Sprinklered – 20 min delayed activation	6/29/17	30 minutes



234 Grand by TVA Arch VS South Landing by Katerra



234 SE GRAND – TVA Architects





Mark Chubb, Senior Analyst
Code Unlimited LLC
mark.chubb@codeul.com
206.388.4355



A Minority-owned Business
www.codeul.com

Disclaimer: This presentation was developed by a third party and is not funded by WoodWorks or the Softwood Lumber Board.