



WoodWorks™
WOOD PRODUCTS COUNCIL

Mass Timber and the WoodWorks Construction Management Program



Brandon Brooks, MBA, PMP
WoodWorks – Wood Products Council
Construction Management Program Manager
Anchorage, AK
Tel: 760.271.3722
brandon.brooks@woodworks.org

credit www.naturallywood.com

Cathedral of Christ the Light
Skidmore, Owings & Merrill LLP
Cesar Rubio Photography

UW MercerCourt, credit WG Clark Construction and
Ankrom Moisan Architects

MASS TIMBER OVERVIEW



OVERVIEW | TIMBER METHODOLOGIES



Heavy Timber
Photo: Benjamin Benschneider



Mass Timber
Photo: John Stamets

Glue Laminated Timber (GLT)

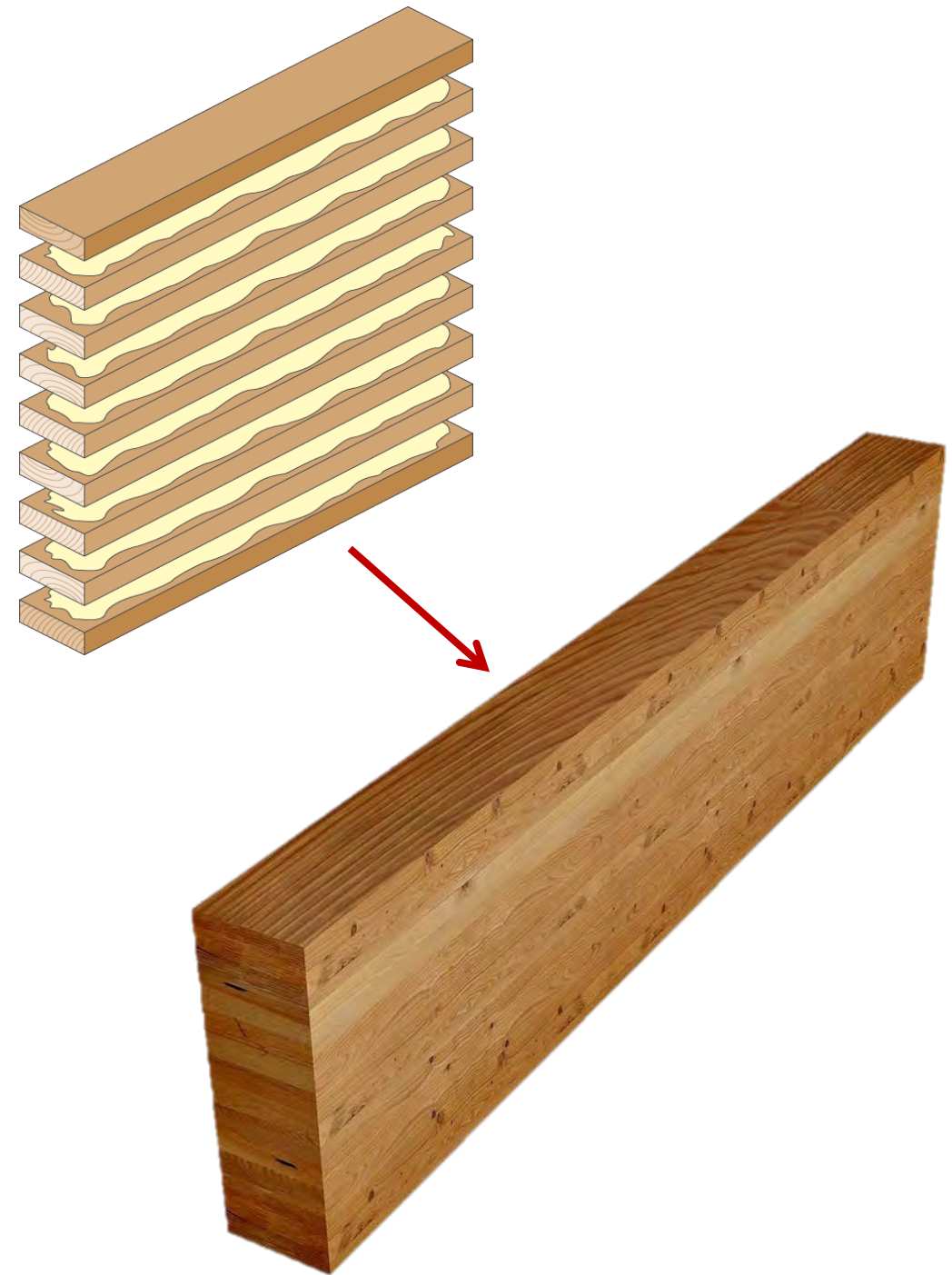
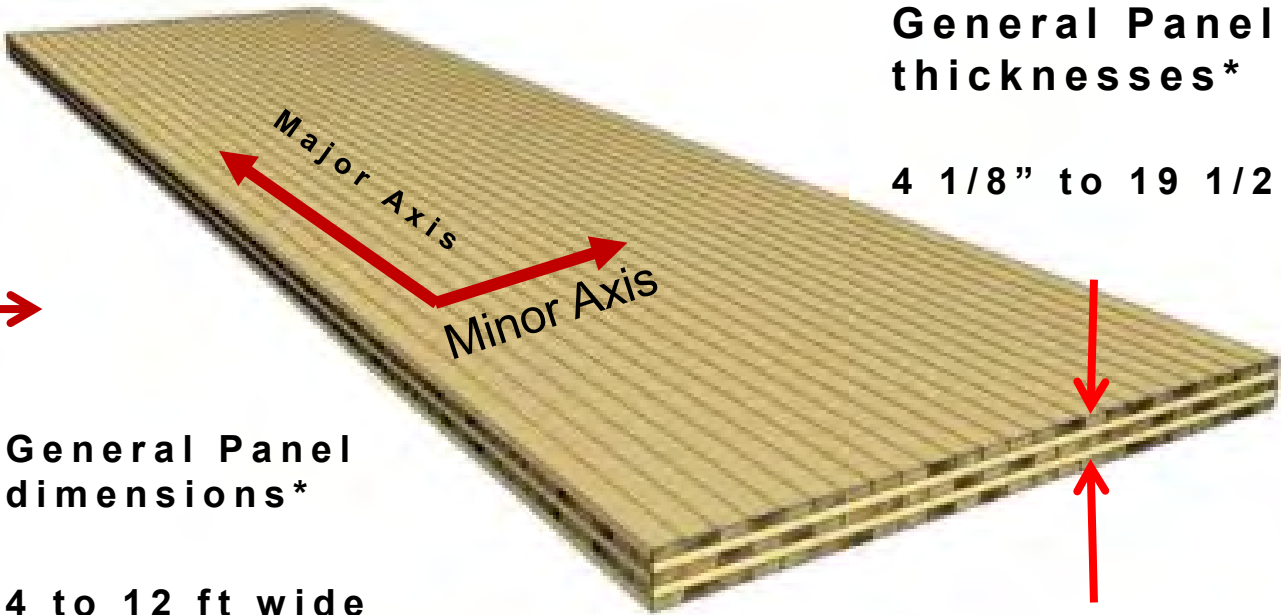
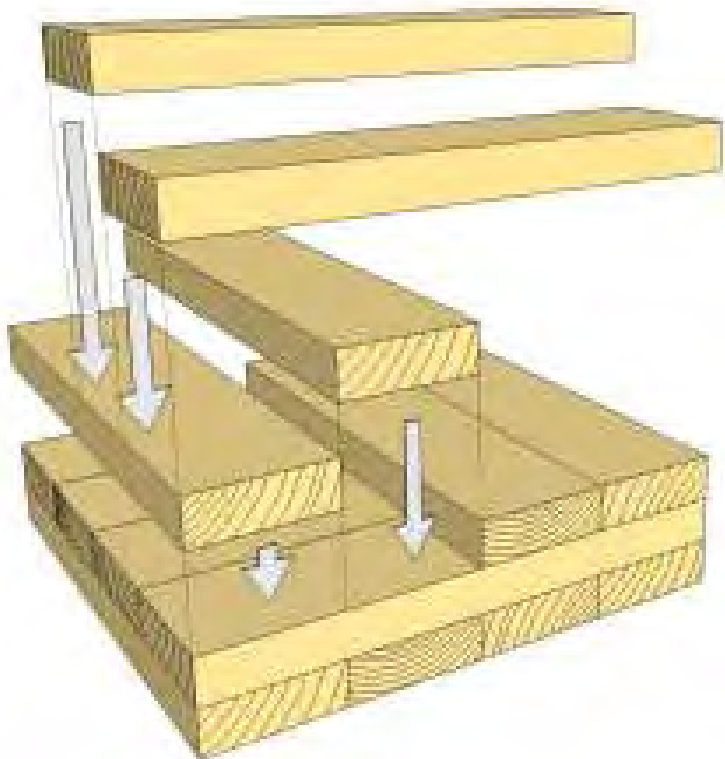


Photo: Manasc Isaac Architects/Fast + Epp

Cross-Laminated Timber (CLT)

With solid sawn laminations



General Panel thicknesses*

4 1/8" to 19 1/2"

General Panel dimensions*

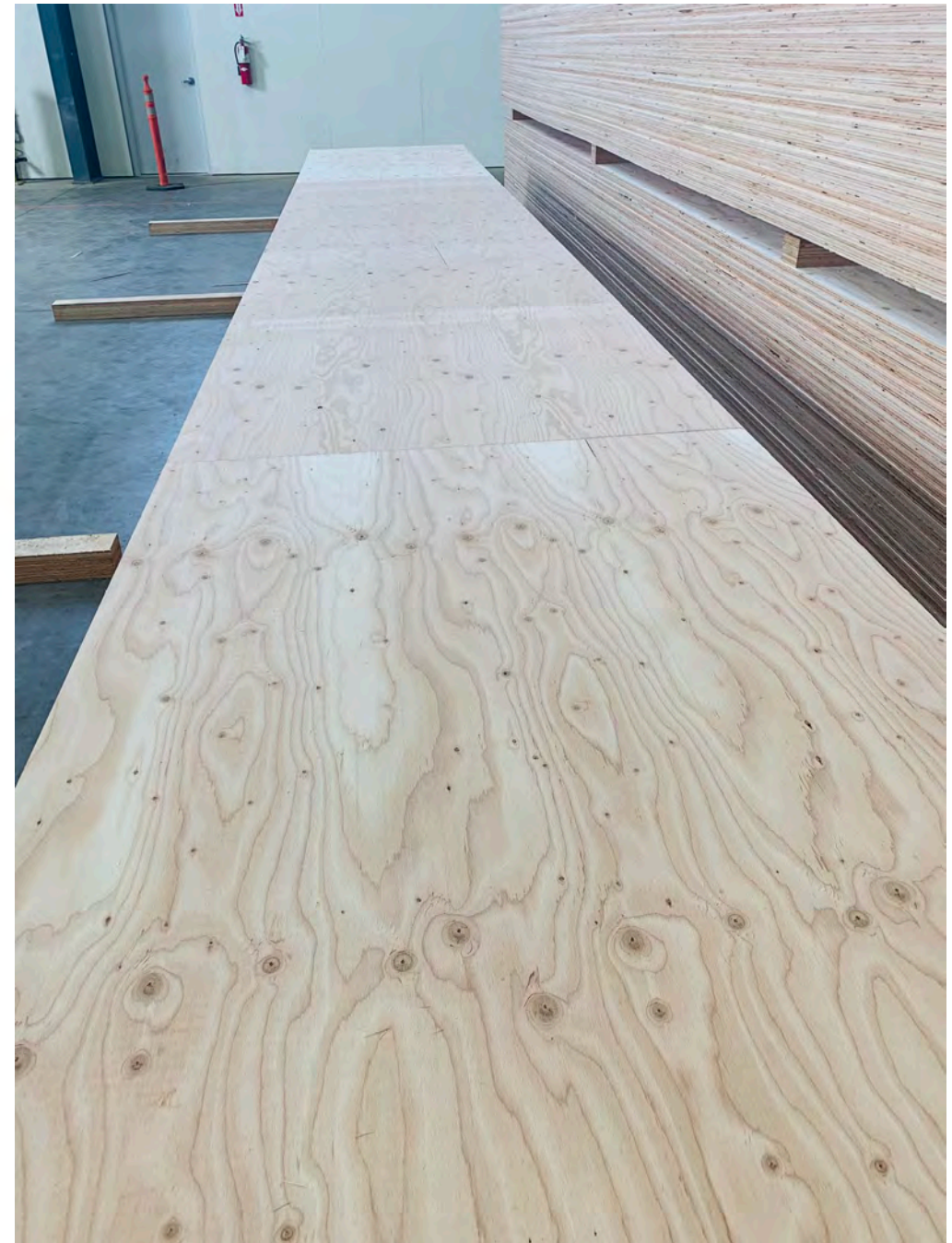
4 to 12 ft wide

24 to 64 ft long

*Consult with manufacturers for available panel sizes

Cross-Laminated Timber (CLT)

With SCL laminations



Nail-Laminated Timber (NLT)

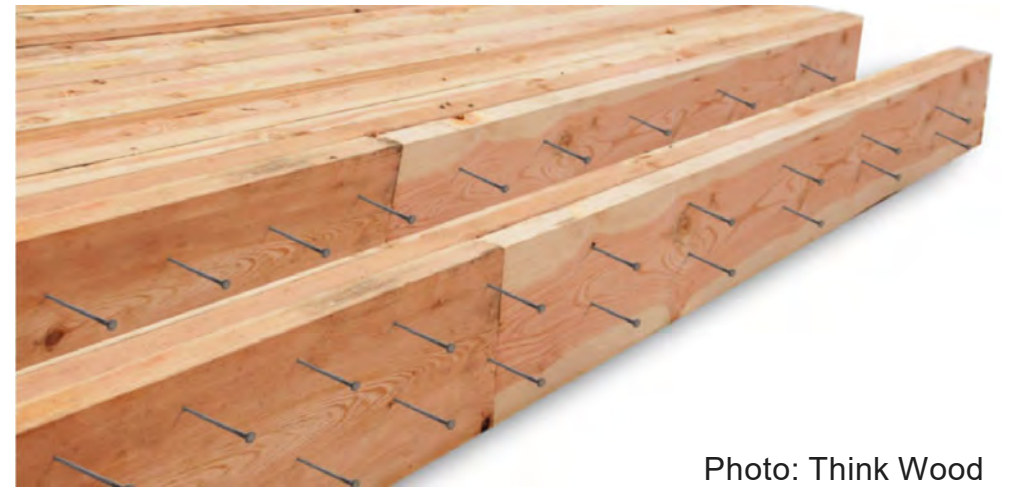


Photo: Think Wood



Dowel-Laminated Timber (DLT)



Photo: StructureCraft

Other Mass Timber Product Options



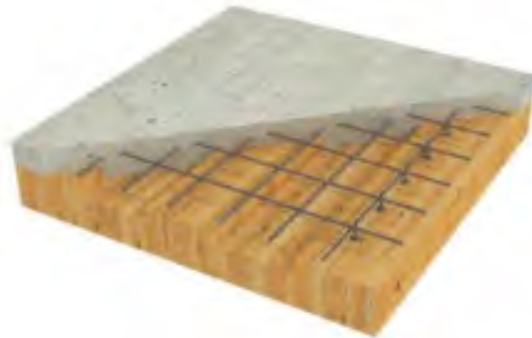
Laminated Veneer Lumber
LVL



Parallel Strand Lumber
PSL



Laminated Strand Lumber
LSL



Timber-Concrete Composite
TCC



Decking

Mass Timber Projects In Design and Constructed in the US (March 2021)



State	Stage		State	Stage	
AK	In Design	2	MS	Construction Started / Built	1
AL	Construction Started / Built	7		In Design	3
AR	In Design	13	MT	Construction Started / Built	10
	Construction Started / Built	6		In Design	12
AZ	In Design	7	NC	Construction Started / Built	25
	Construction Started / Built	2		In Design	27
CA	In Design	2	ND	In Design	1
	Construction Started / Built	67	NE	Construction Started / Built	3
CO	In Design	106		In Design	5
	Construction Started / Built	18	NH	Construction Started / Built	1
CT	In Design	20		In Design	3
	Construction Started / Built	6	NJ	Construction Started / Built	1
DC	In Design	7		In Design	10
DE	Construction Started / Built	5	NM	Construction Started / Built	1
FL	In Design	6		In Design	1
	Construction Started / Built	1	NV	In Design	1
GA	In Design	19	NY	Construction Started / Built	12
	Construction Started / Built	36		In Design	31
HI	In Design	10	OH	Construction Started / Built	7
	Construction Started / Built	22		In Design	9
IA	In Design	2	OK	Construction Started / Built	2
	Construction Started / Built	1		In Design	2
ID	In Design	3	OR	Construction Started / Built	57
	Construction Started / Built	4		In Design	21
IL	In Design	5	PA	Construction Started / Built	6
	Construction Started / Built	5		In Design	6
IN	In Design	15	RI	Construction Started / Built	2
	Construction Started / Built	14		In Design	2
KS	In Design	3	SC	Construction Started / Built	18
	Construction Started / Built	1		In Design	7
KY	In Design	3	SD	Construction Started / Built	1
	Construction Started / Built	2		In Design	1
LA	In Design	4	TN	Construction Started / Built	8
	Construction Started / Built	1		In Design	2
MA	In Design	4	TX	Construction Started / Built	30
	Construction Started / Built	2		In Design	42
MD	In Design	2	UT	Construction Started / Built	5
	Construction Started / Built	23		In Design	8
ME	In Design	34	VA	Construction Started / Built	7
	Construction Started / Built	4		In Design	8
MI	In Design	5	VT	Construction Started / Built	2
	Construction Started / Built	3		In Design	10
MN	In Design	15	WA	Construction Started / Built	63
	Construction Started / Built	3		In Design	47
MO	In Design	9	WI	Construction Started / Built	19
	Construction Started / Built	11		In Design	15
	Construction Started / Built	3	WV	Construction Started / Built	2
	Construction Started / Built	8	WY	Construction Started / Built	2
	In Design	8		In Design	1

Considering mass timber for a project?

Ask us anything.

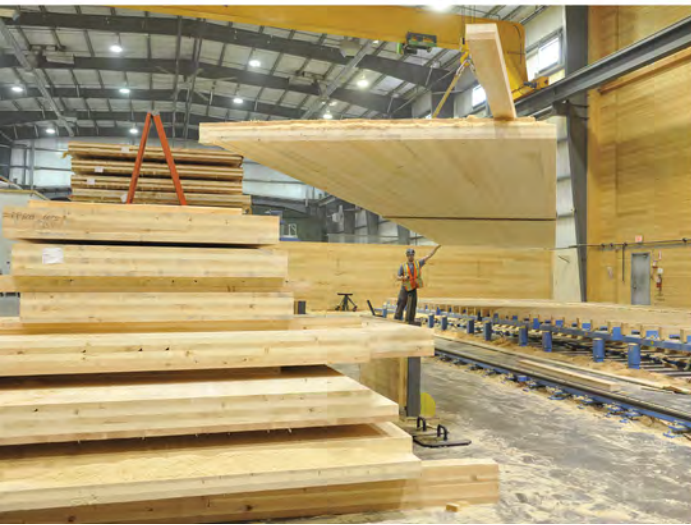
For free project support, contact:

help@woodworks.org

woodworks.org/project-assistance

Obstacles Preventing the Increased Adoption of Sustainable Mass Timber

A study of 84 projects that could not clear the hurdles



Report created for ClimateWorks
By WoodWorks – Wood Products Council

Mass Timber Obstacles Report Results

Obstacle	Number of Times Noted	Percent of Projects That Experienced This Issue
Cost	42	50%
Lack of general contractor/installer experience	32	38%
Design limitations	31	37%
Design team education needed	18	21%
Comparative business case needed	14	17%
Building code	14	17%
Lack of owner/developer familiarity	10	12%
Material supply/manufacturing	9	11%
Design too far along to switch	9	11%
Project did not go forward at all	7	8%
Durability	4	5%
	190	84 Projects





WoodWorks™
WOOD PRODUCTS COUNCIL

Construction Management Program Strategic Focus Areas

- **Contractors - Expansion of 2020 Construction Management Education**
- **Community Colleges - Construction Technology Departments**
- **Workforce Programs - Federal, State, Regional, Local where Projects are Located**
- **Training Centers & Construction Associations – Project Managers and Installers**
- **University Construction Management Departments**

Results to date...

- WoodWorks sponsored training programs....
 - Chicago Carpenters completed over 2,500 training hours (32 hours/person)
 - Seattle Carpenters completed over 150 training hours (8 hours/person)
- Construction Management Workshops 2019 – 2020
 - 216 attendees at in-person regional events
 - 440 attendees at nationally distributed virtual events



Construction Management Program

2021 Program Expansion and Beyond



In Progress/Development



MASS TIMBER
CONSTRUCTION
MANUAL



INSTALLER TRAINING
PACKAGES AND
TRAINING CENTER
COLLABORATION



VIRTUAL AND/OR IN-
PERSON WORKSHOPS

In Planning



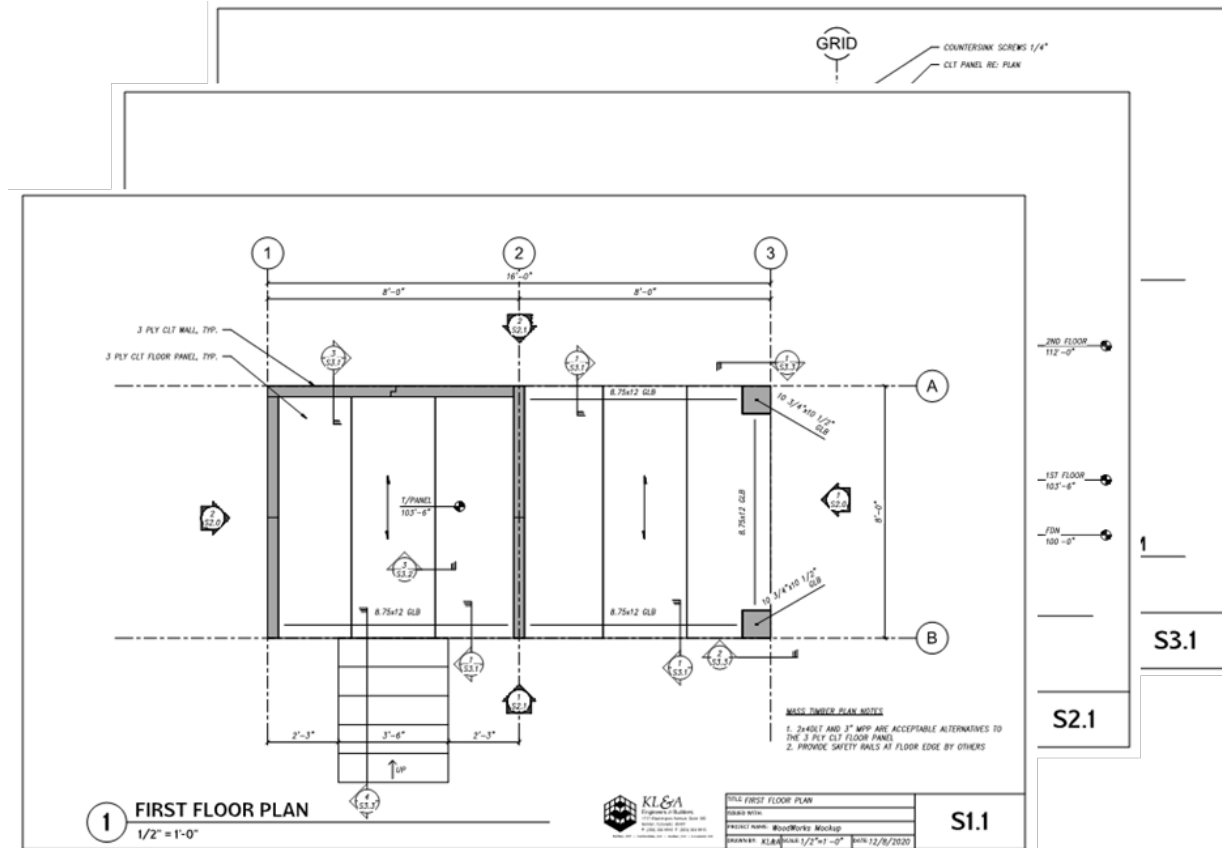
ENGAGE WITH
GENERAL
CONTRACTORS



COMMUNITY COLLEGES



PARTNER WITH
CONSTRUCTION
ASSOCIATIONS



Woodworks Standard Mock-Up Drawings

Photo Credit: WoodWorks



WoodWorks Mass Timber Construction Manual



Mass Timber Construction Manual



WoodWorks™
WOOD PRODUCTS COUNCIL



We're stronger together.

Our network of affiliated professionals offer a wealth of shared knowledge, expertise, and opportunity for growth. Find experienced professionals who share a mutual interest in the future of timber design and construction.

ARCHITECTS

ENGINEERS

CONTRACTORS

INSTALLERS

DEVELOPERS

[+ VIEW ALL](#)



**WOODWORKS
INNOVATION
NETWORK**

Photo: Marcus Kauffman



WoodWorks™
WOOD PRODUCTS COUNCIL



Brandon Brooks, MBA, PMP
WoodWorks – Wood Products Council
Construction Management Program Manager
Anchorage, AK
Tel: 760.271.3722
brandon.brooks@woodworks.org



First Tech Federal Credit Union, Hacker, photo Jeremy Bittermann