

BUILT-UP ROOFING - CLASS A, B, OR C PER LOCAL CODE REQUIREMENTS

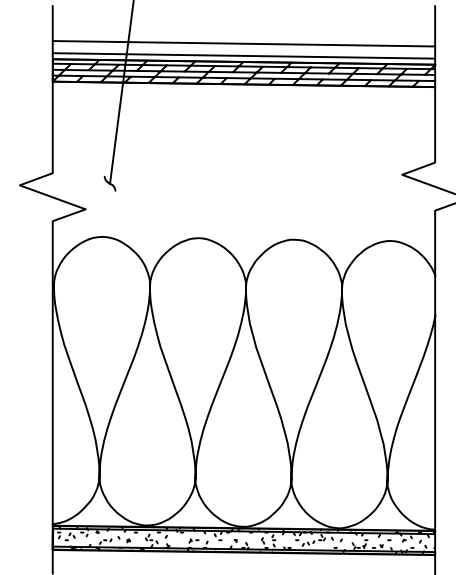
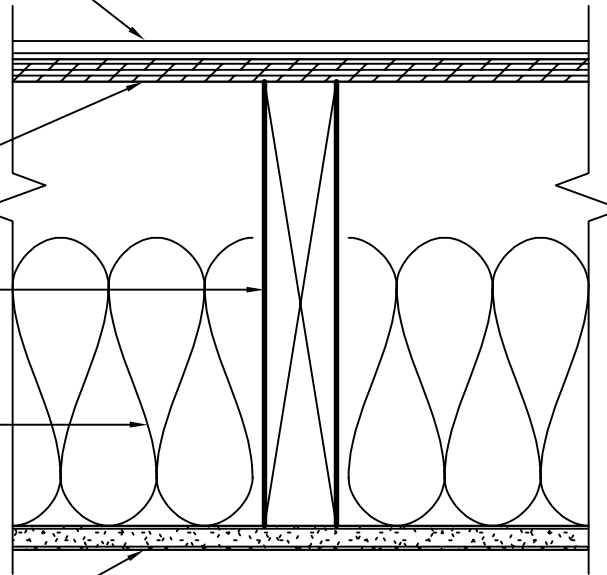
MIN. 15/32" WOOD STRUCTURAL PANEL SUBFLOOR, SEE STRUCTURAL DRAWINGS

MIN. 2X10 FLOOR JOISTS AT 16" O.C., SLOPED PER PLAN, SEE STRUCTURAL DRAWINGS

BATT INSULATION PER THERMAL REQUIREMENTS

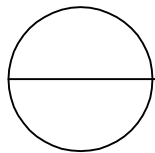
1 LAYER 1/2" GYP. BD.

MIN. 2X10 ROOF JOISTS AT 16" O.C., SLOPED PER PLAN, SEE STRUCTURAL DRAWINGS



VIEW PERPENDICULAR TO FRAMING

VIEW PARALLEL TO FRAMING



NON-RATED 2X ROOF - SLOPED FRAMING

3" = 1'-0"