

1 1/2" LIGHTWEIGHT CONCRETE

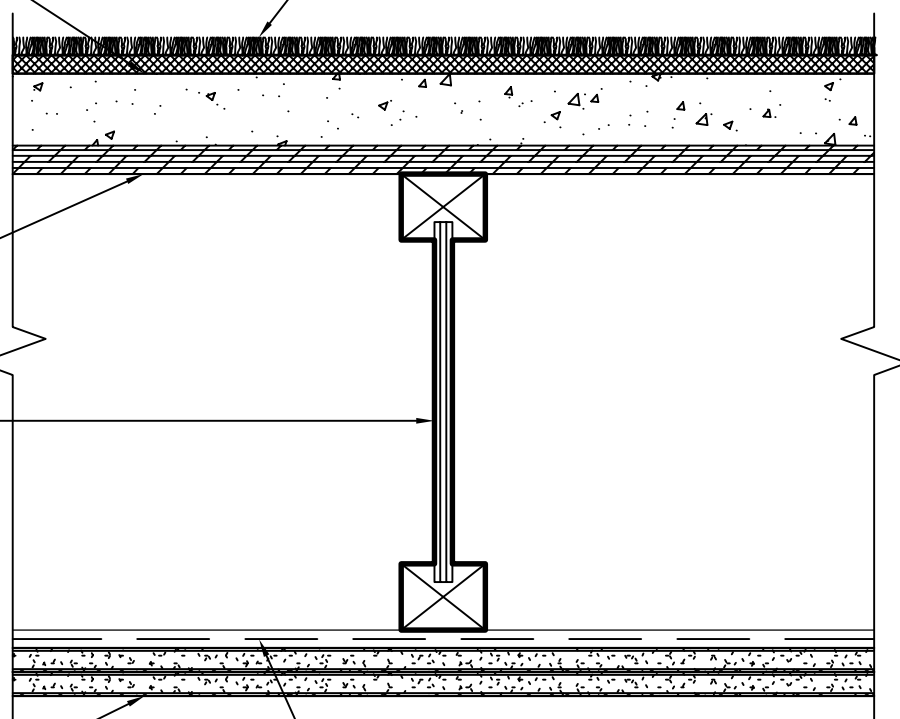
CARPET AND PAD

MIN. 19/32" WOOD STRUCTURAL
PANEL SUBFLOOR, SEE
STRUCTURAL DRAWINGS

MIN. 9 1/2" DEEP JOISTS
AT 24" O.C., SEE
STRUCTURAL DRAWINGS

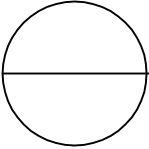
2 LAYERS 1/2" TYPE 'X' GYP. BD.

RESILIENT CHANNELS PERPENDICULAR
TO JOISTS AT 16" O.C.



1 HOUR RATED PER UL DESIGN No. L518
STC 58 AND IIIC 54 PER NATIONAL EVALUATION SERVICE REPORT No. NER-200

1 HOUR STC 58 I-JOIST FLOOR ASSEMBLY (LWC TOPPING)



3" = 1'-0"