

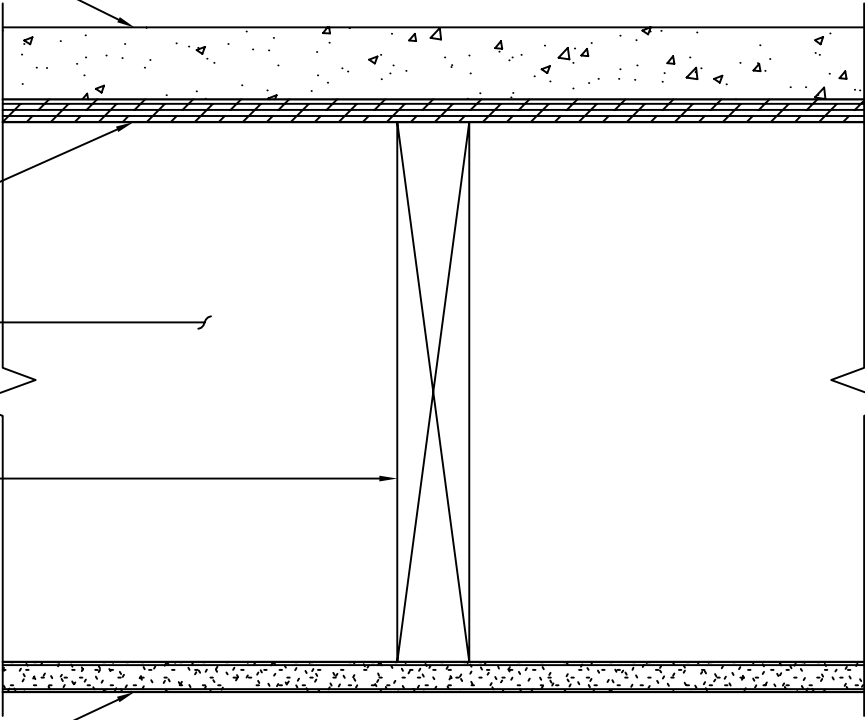
1 1/2" LIGHTWEIGHT CONCRETE

MIN. 15/32" WOOD STRUCTURAL
PANEL SUBFLOOR, SEE
STRUCTURAL DRAWINGS

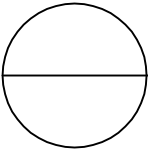
MIN. 1X3 CROSS BRIDGING
OR 2X10 SOLID BLOCKING

MIN. 2X10 FLOOR JOISTS
AT 16" O.C. WITH
FIREBLOCKING PER
LOCAL CODES, SEE
STRUCTURAL DRAWINGS

MIN. 5/8" TYPE 'X' GYP. BD.



1 HOUR RATED PER UL DESIGN No. L501



1 HOUR 2X FLOOR ASSEMBLY (LWC TOPPING)

3" = 1'-0"