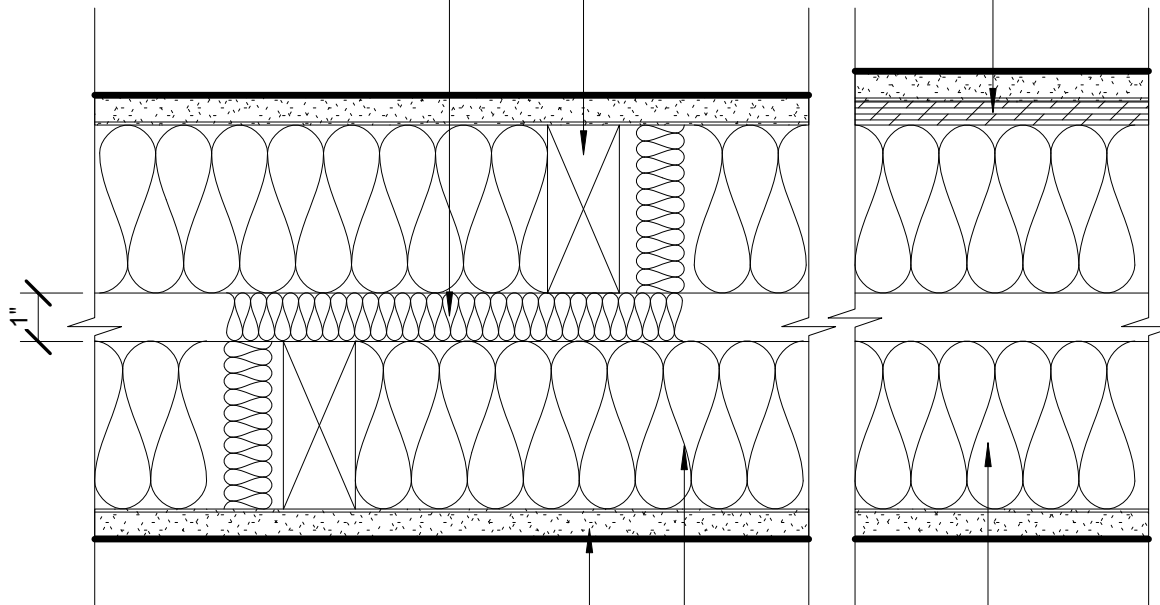


WOOD STRUCTURAL SHEAR PANEL WHERE OCCURS

MIN. 2 x 4 WOOD STUDS AT MAX. 24" O.C.

PROVIDE RESILIENT DRAFT  
STOPS AT MAX. 10'  
HORIZONTAL SPACING



ONE LAYER 5/8" TYPE 'X' GYP. BD. EACH SIDE

3 1/2" MAX. THICKNESS GLASS OR MINERAL  
FIBER BATT INSULATION

PROVIDE FIRE BLOCKING VERTICALLY AT CEILING AND  
FLOOR LEVELS

ONE HOUR RATING PER UL DESIGN No. U341

STC 57 PER CALIFORNIA OFFICE OF NOISE CONTROL ASSEMBLY No. 1.2.4.1.5.4

## ONE HOUR DOUBLE-STUD WALL

