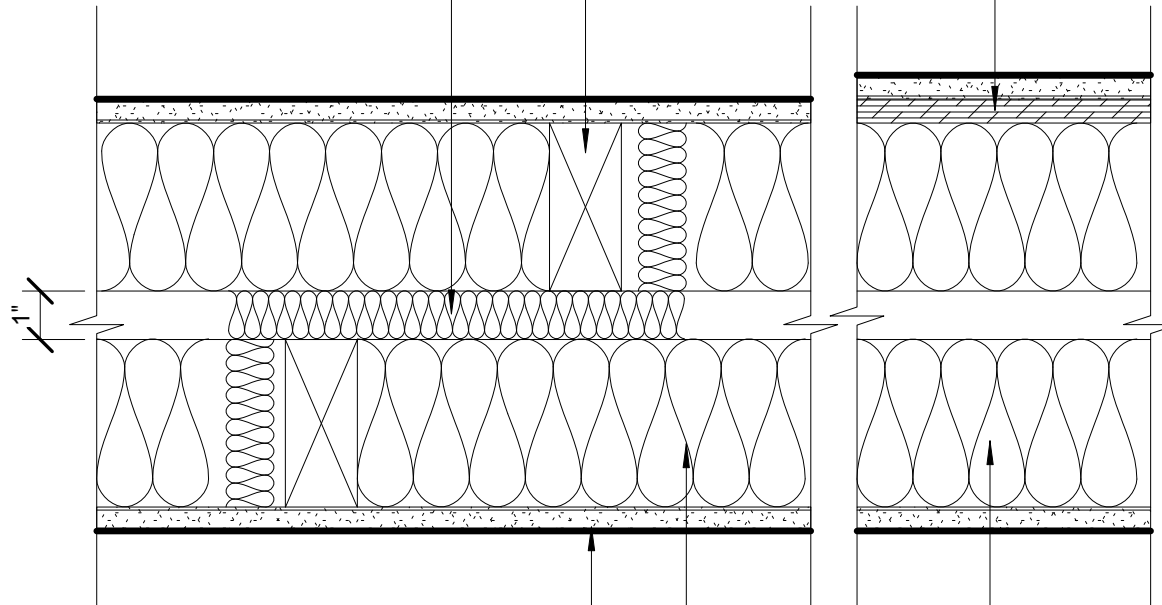


WOOD STRUCTURAL SHEAR PANEL WHERE OCCURS

MIN. 2 x 4 WOOD STUDS AT MAX. 24" O.C.

PROVIDE RESILIENT DRAFT  
STOPS AT MAX. 10'  
HORIZONTAL SPACING



ONE LAYER MIN. 1/2" GYP. BD. EACH SIDE

3 1/2" MAX. THICKNESS GLASS OR MINERAL  
FIBER BATT INSULATION

PROVIDE FIRE BLOCKING AT MAX. 10' VERTICALLY AT  
WALLS > 10' HIGH

STC 59 PER CALIFORNIA OFFICE OF NOISE CONTROL ASSEMBLY No. 1.2.4.1.4.6

## NON-RATED DOUBLE-STUD WALL

