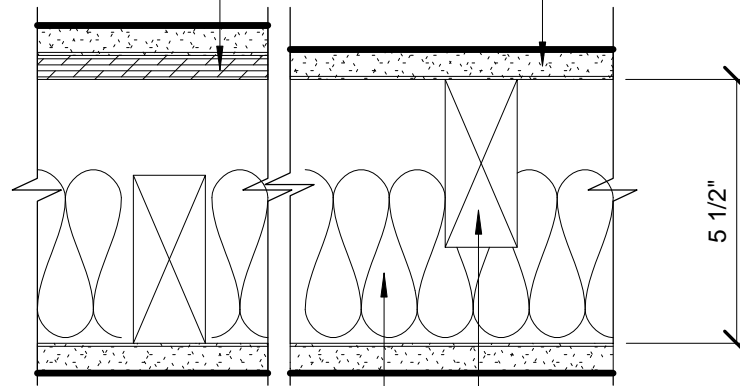


1 LAYER 5/8" TYPE 'X' GYP. BD.
EACH SIDE

WOOD STRUCTURAL SHEAR
PANEL WHERE OCCURS



3 1/2" BATT INSULATION

2 x 4 STAGGERED STUDS
AT 16" O.C. ON 2 x 6 PLATE

ONE HOUR RATING PER GA FILE No. 3380; SEE ALSO UL DESIGN No. U305
STC 53 PER CALIFORNIA OFFICE OF NOISE CONTROL ASSEMBLY No. 1.2.3.5.4.3

ONE HOUR STAGGERED STUD WALL

