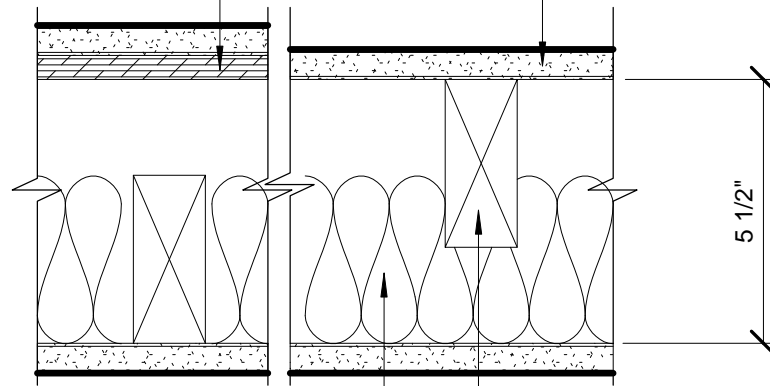


1 LAYER MIN 1/2" GYP. BD. EACH SIDE

WOOD STRUCTURAL SHEAR
PANEL WHERE OCCURS



3 1/2" BATT INSULATION

2 x 4 STAGGERED STUDS
AT 16" O.C. ON 2 x 6 PLATE

STC 53 PER CALIFORNIA OFFICE OF NOISE CONTROL ASSEMBLY No. 1.2.3.5.4.3

NON-RATED STAGGERED STUD WALL

